

# GATE OF THUNDER

TM

**SUPER**  
CD-ROM<sup>2</sup> SYSTEM



HUDSON GROUP  
**HUDSON SOFT**<sup>®</sup>

**TURBO**  
**16**  
**GRAFX**

TM

# Thank You

**...for Buying this Advanced TurboGrafX™-CD Game disc.**



Before using your new game disc, please read this instruction manual carefully. Familiarize yourself with the proper use of your TurboGrafX-16 Entertainment SuperSystem, TurboGrafX-CD unit and TurboDuo™, precautions concerning their use and the proper use of this CD game disc. Always operate your TurboGrafX-16 SuperSystem and this CD game disc according to instructions. Please keep this manual in a safe place for future reference.

©1992 RED

©1992 HUDSON SOFT

SYN SOUND DESIGN

TurboGrafX™-CD Player

TurboGrafX™-16 Entertainment SuperSystem

TurboDuo™

## WARNINGS

- 1 This is a precision device and should not be used or stored under conditions of excessive temperature or humidity.
- 2 Do not use this CD game disc with ordinary CD players. The computer data may damage your audio equipment. In addition, prolonged use of this disc with headphones in a "regular" CD player could cause hearing impairment.
- 3 Never open the CD player's cover while the CD is spinning. This may damage both the disc and the system.
- 4 Never pull the System Card out while the TurboGrafX-16 switch is in the "on" position, as this may damage both the SuperSystem and the CD Interface Unit.
- 5 Do not wipe your Entertainment SuperSystem, TurboGrafX-CD player or TurboGrafX-CD with volatile liquids such as paint thinner or benzene.
- 6 Read this instruction book carefully and keep it in a safe place for future reference.

TurboGrafX-CD discs are made especially for use with the TurboGrafX-16 Entertainment SuperSystem, TurboGrafX-CD player and TurboDuo™. They will not operate on other systems.

Any duplication of this software is strictly prohibited.

# Care of Your CD Game Disc and Getting Started

## Care of Your CD Game Disc

- 1 Keep your CD game disc clean!
- 2 Make sure the shiny, "signal reading" side of your CD disc is clean at all times.
- 3 If your CD disc does become dirty, wipe it clean with a soft cloth.
- 4 Make sure that the surface of your CD disc does not get scratched.
- 5 Take the CD disc carefully in and out of its case.
- 6 Never write on your CD disc. Writing on it may damage its surface or interfere with its operation.
- 7 Never bend your CD disc.
- 8 Do not try to make the hole in your CD disc larger!
- 9 Place your CD disc back in its case when you have finished playing.
- 10 Avoid high temperature and humidity.

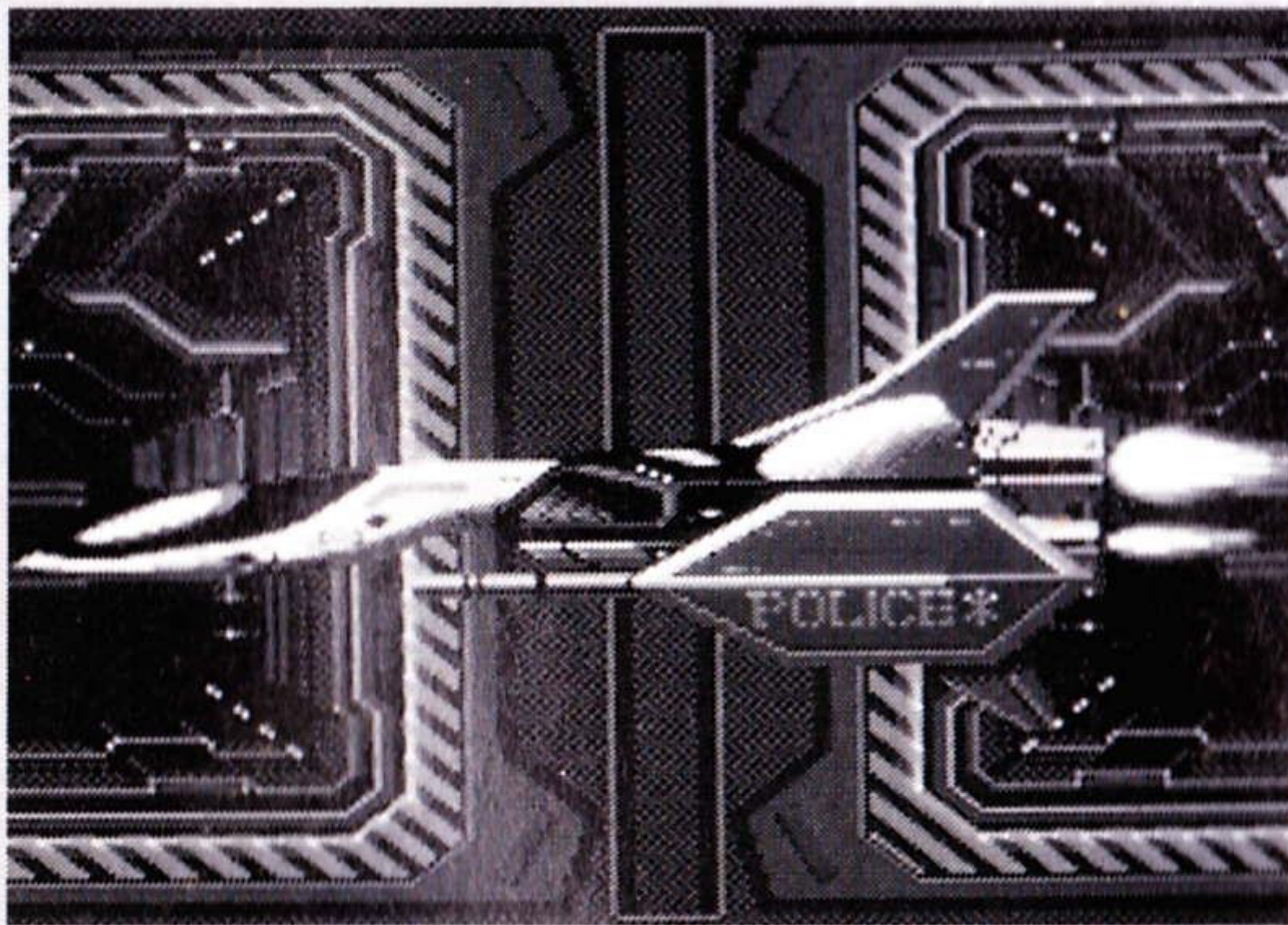
## Getting Started

- 1 Make sure your TurboDuo™, Game interface, television and audio system are properly connected (refer to your TurboDuo™ instruction manual).
- 2 Plug your TurboDuo™ Power Adoptor into a wall outlet and slide the power switch to the right ("ON" position). Turn on your television and make sure that it is on the correct channel.
- 3 Open the TurboDuo™ CD player cover by pressing the button. Avoid touching the inside of the unit. Never operate your CD player with the cover open.
- 4 With the game-title side of your CD game disc facing upwards, set your disc into position. Make sure that the hole is centered on the spindle and close the cover. The initial TurboGrafx-CD screen should appear.

## Story

**Aries was a peaceful and calm planet for millenniums, however, they are now faced with their worst crisis. The deadly army of Obellon fighters lead by General Don Jingi, the evil merchant known to do anything for personal gain, is out to steal the "Starlight," a powerful source of energy that could destroy the universe if misused.**

**You must properly guide the "Hunting Dog" fighter-plane along with Hawk and Esty (special undercover agents protecting the Galaxy) to destroy Obellon before they destroy the world. Obellon is so tough! But you've gotta defend Aries with Esty. You are the last resort of our planet.**



## Meet the Heroes and Enemies



### **Hawk**

Our hero and the pilot of Hunting Dog.



### **Esty**

Pilot of Wild Cat.



### **General Don Jingi**

Leader of the Obellon Army, an evil organization of crime.

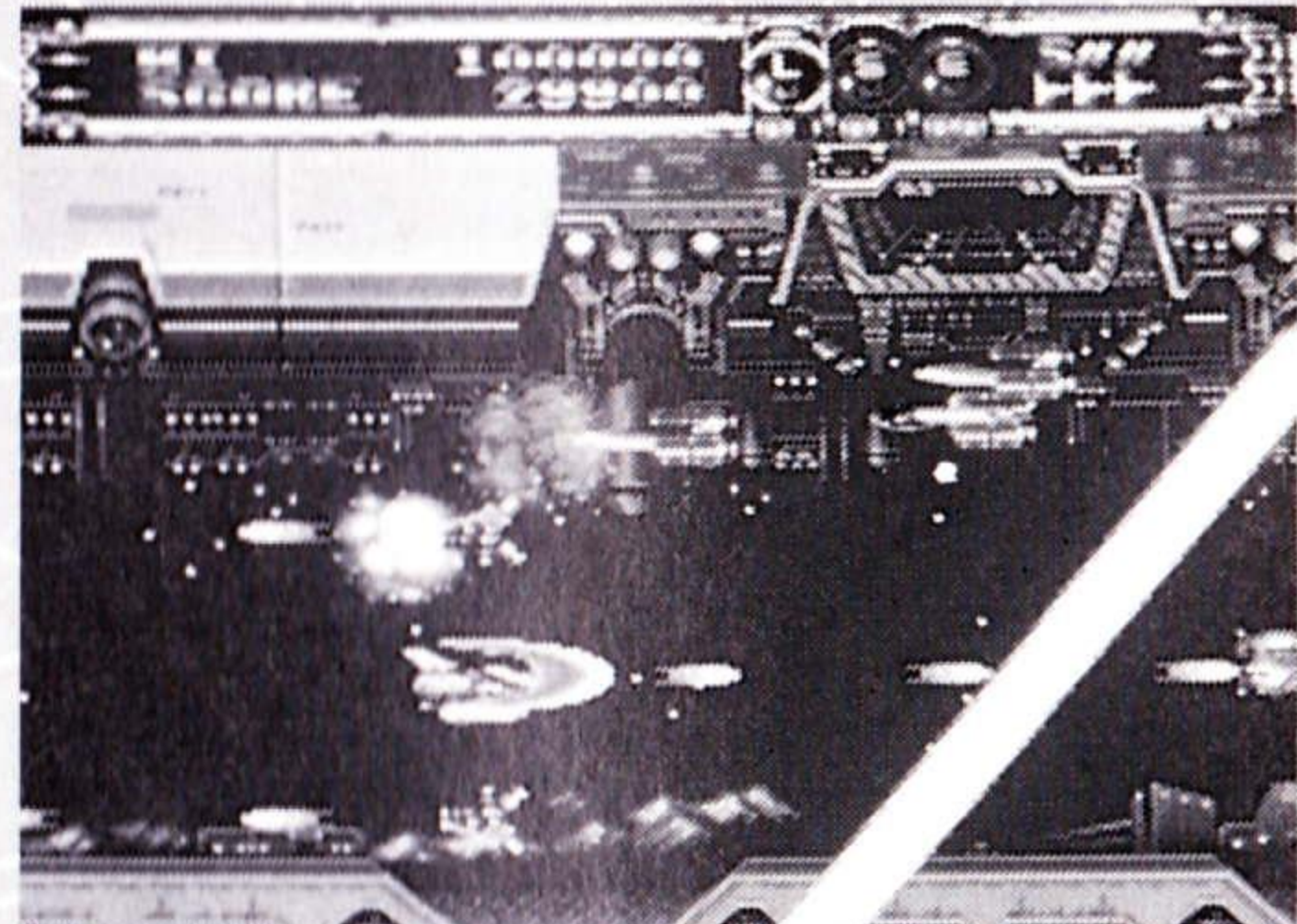
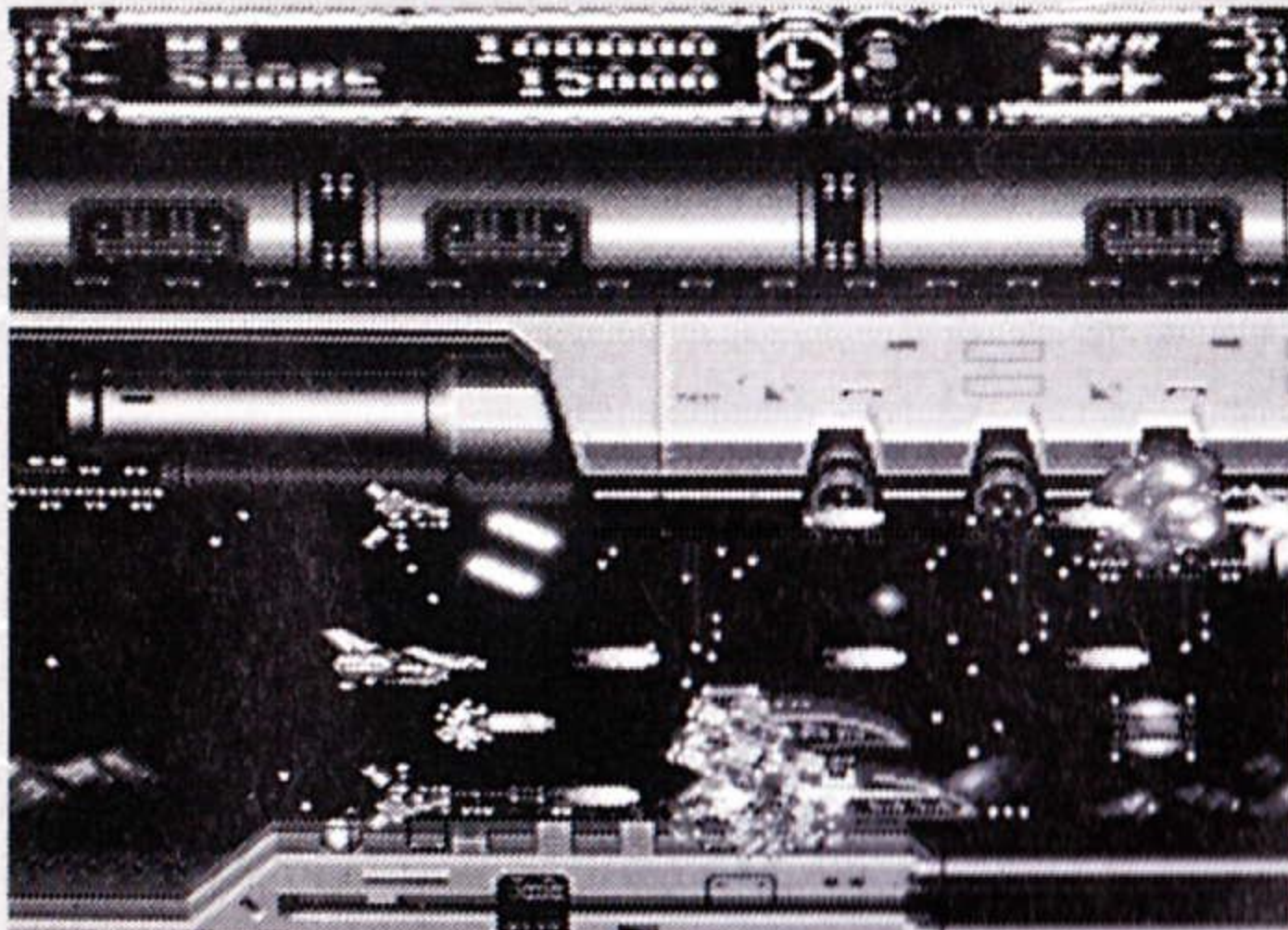


### **Eagle**

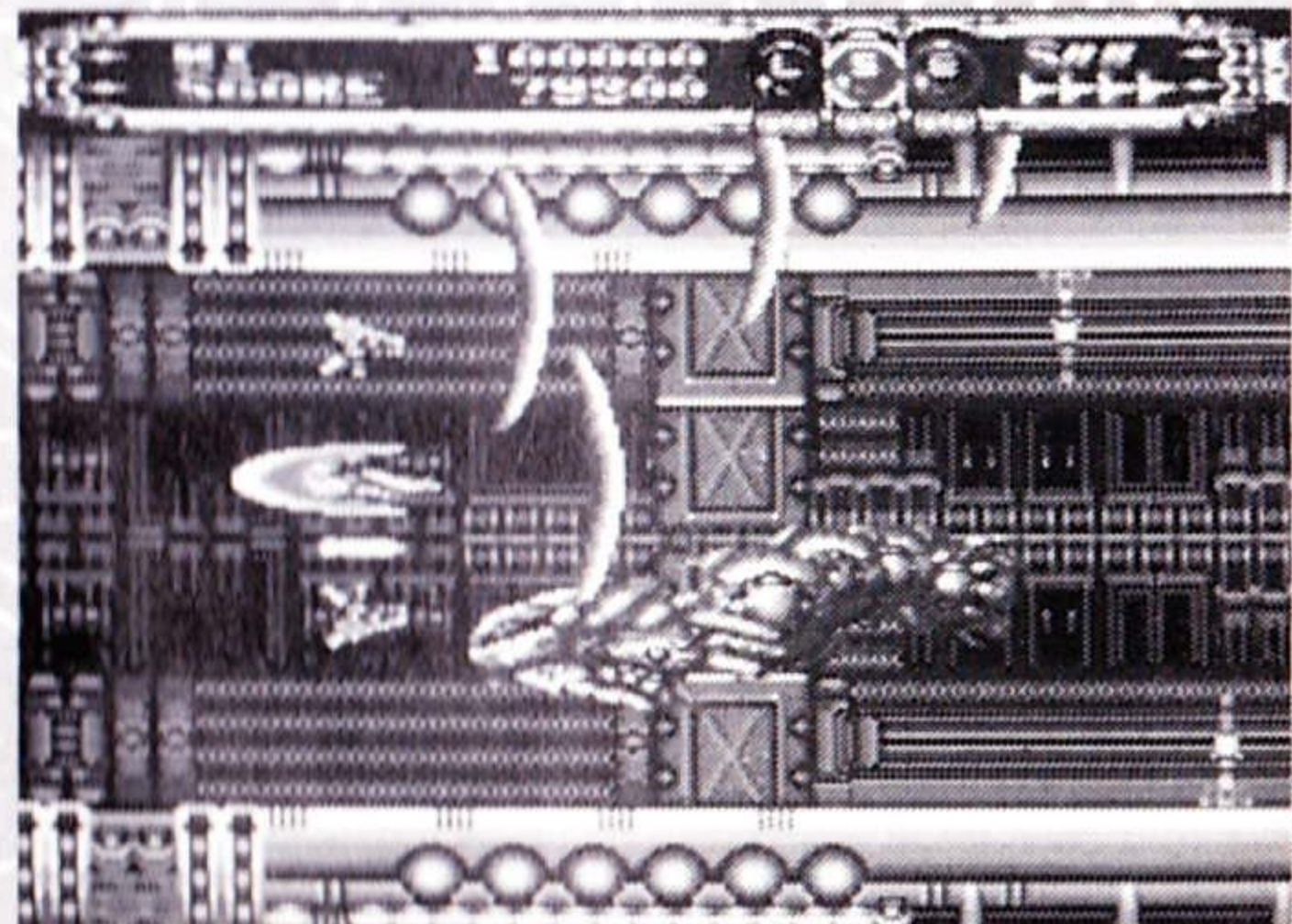
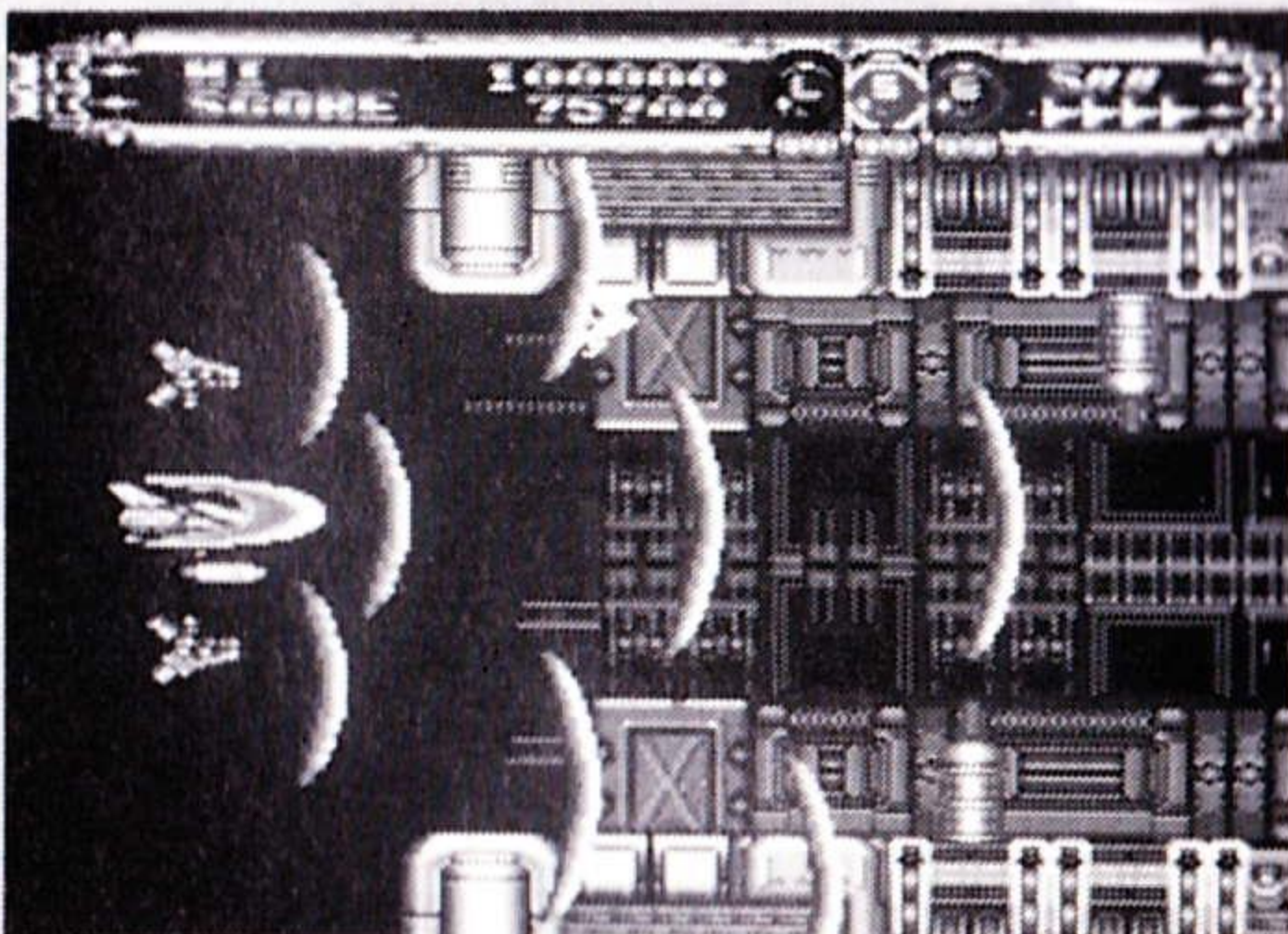
General Don Jingi's right-hand man.

# 7 Stage Settings

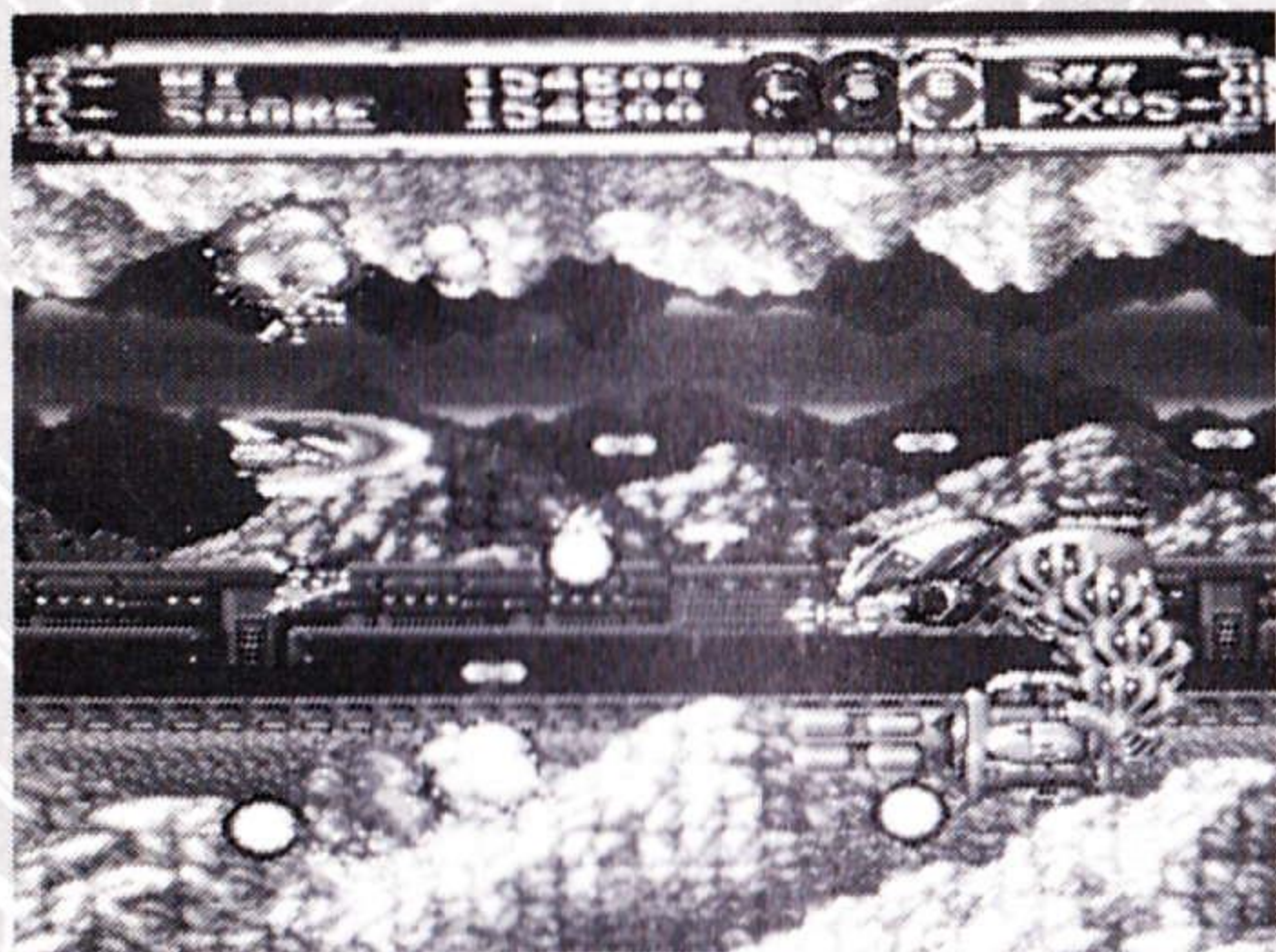
## Stage 1: Above Planet Slash



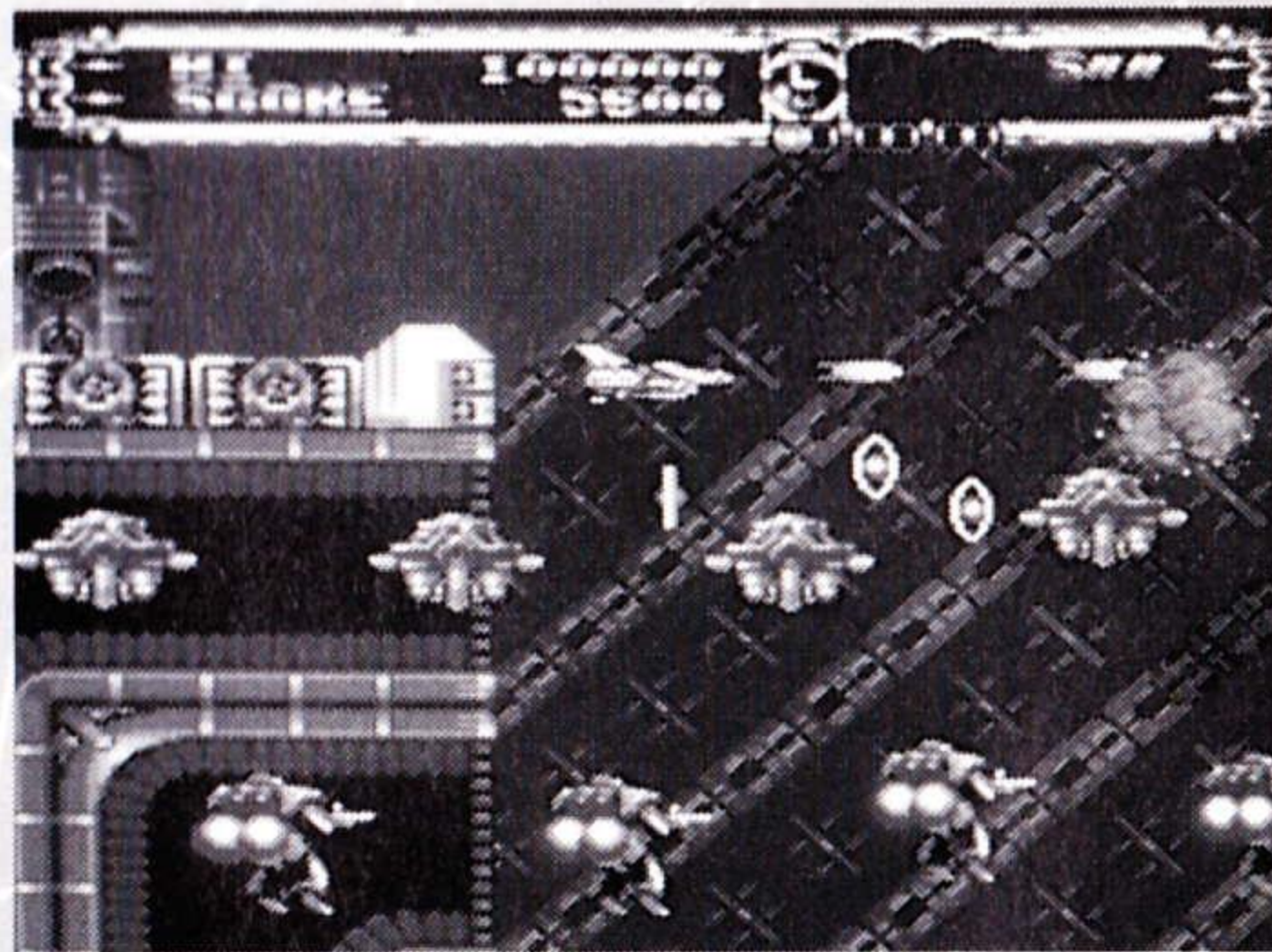
## Stage 2: At the forefront of enemy grounds



## **Stage 3: In the mine**



## **Stage 4: Enemy relay station**



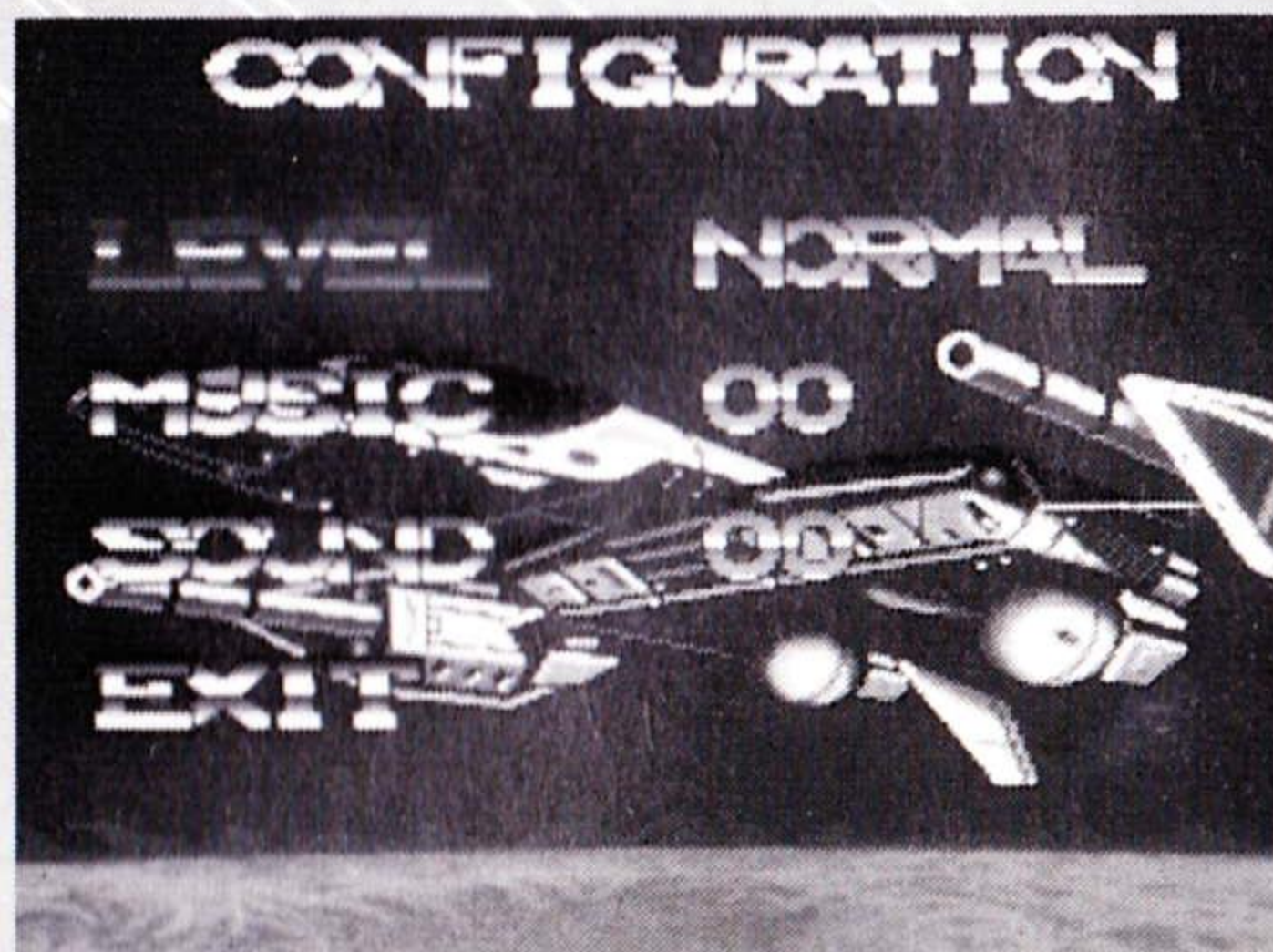
**Stage 5: Artillery hangar**

**Stage 6: Above the spaceship**

**Stage 7: Inside the spaceship**

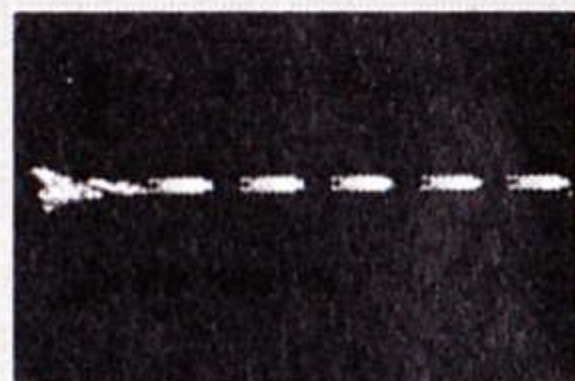
## **Three Level Selections According to Your Expertise!**

Select from among the 3 levels according to your expertise. The final mode is the daring devil mode that you must clear to conquer Obellon.



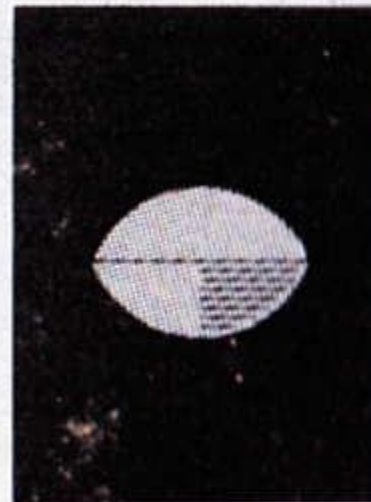
# Weapons and Power Boosters

## Normal

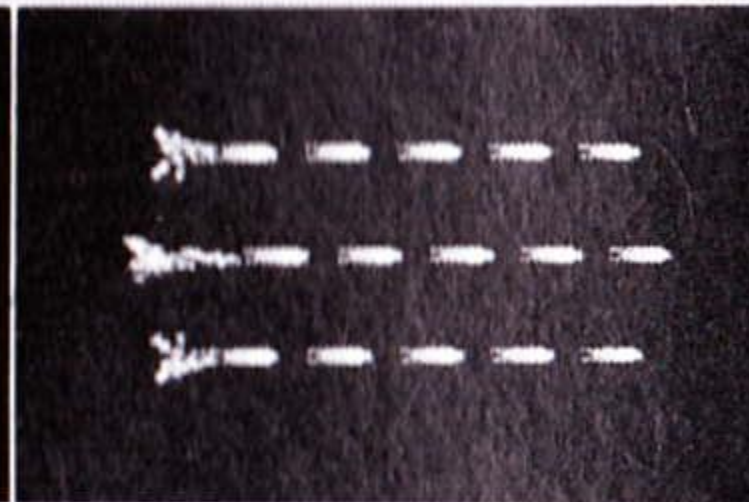


**LASER BEAM**  
Blue

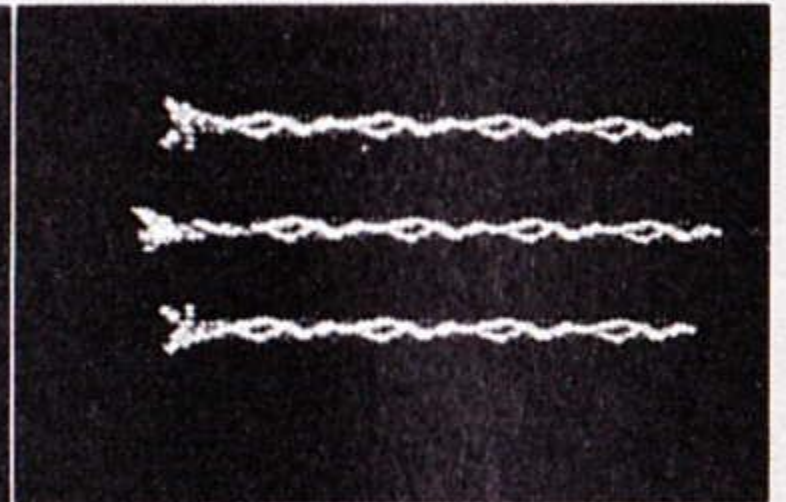
**Unit**



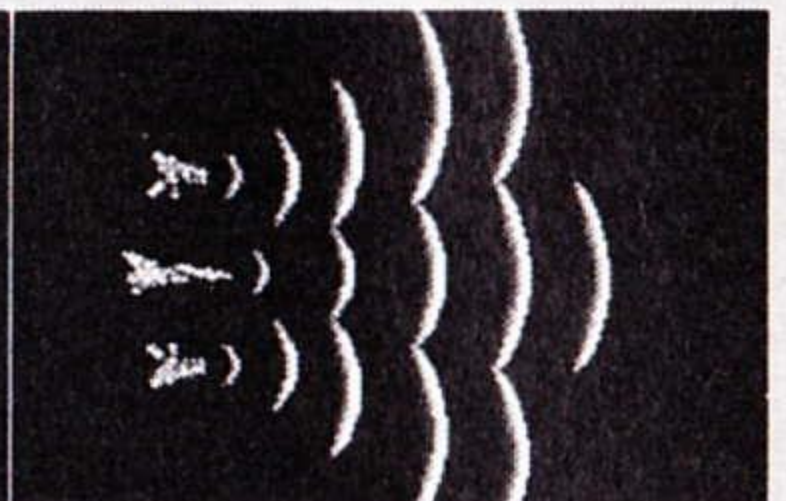
**Level-1**



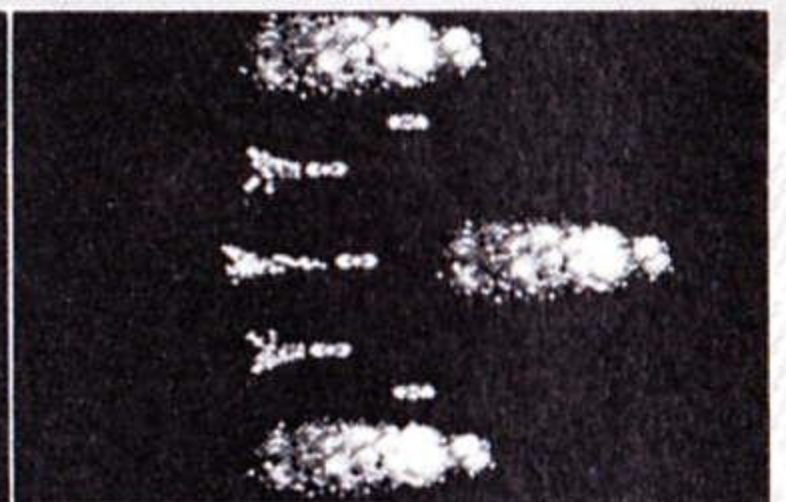
**Level-2**



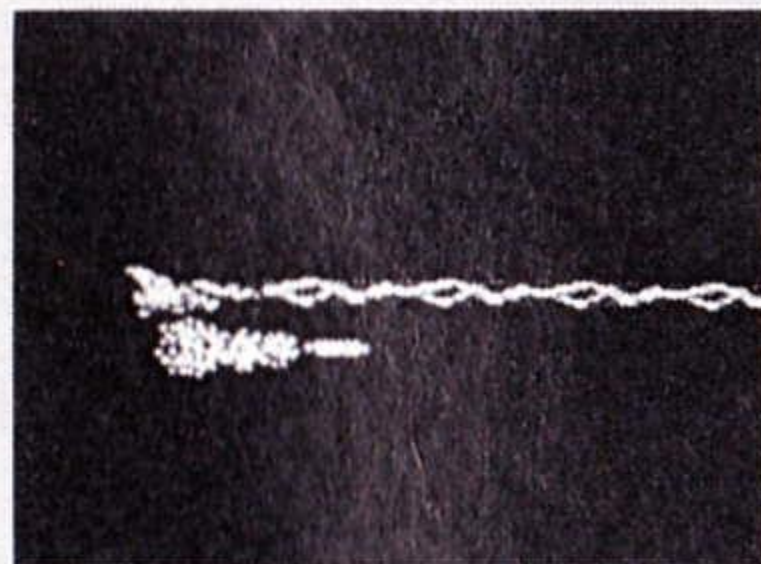
**WAVES**  
Green



**EARTHQUAKE**  
Red



## Missiles



**Unit**



**High-speed  
guided missile.  
3 speed-up levels**

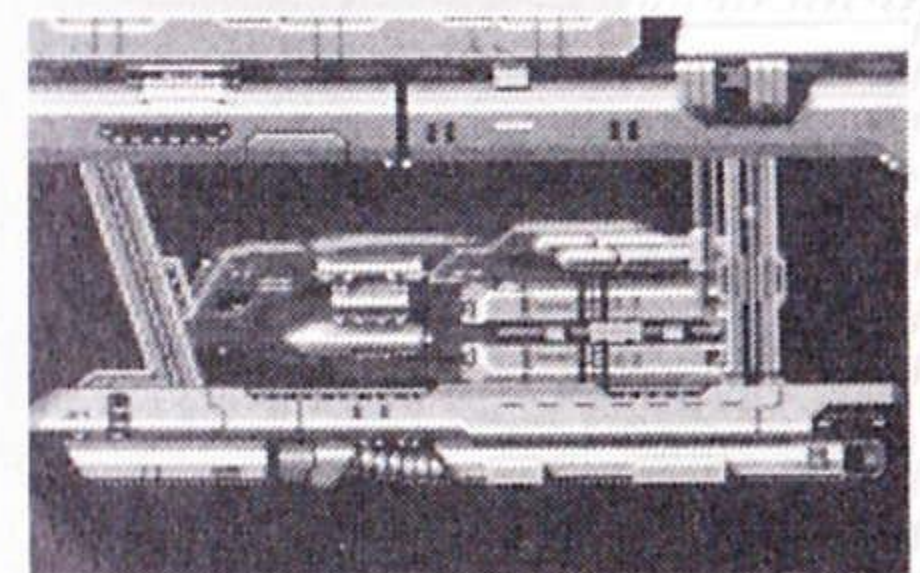
## Shield



**Unit**



**Protects you  
up to 3 attacks.**



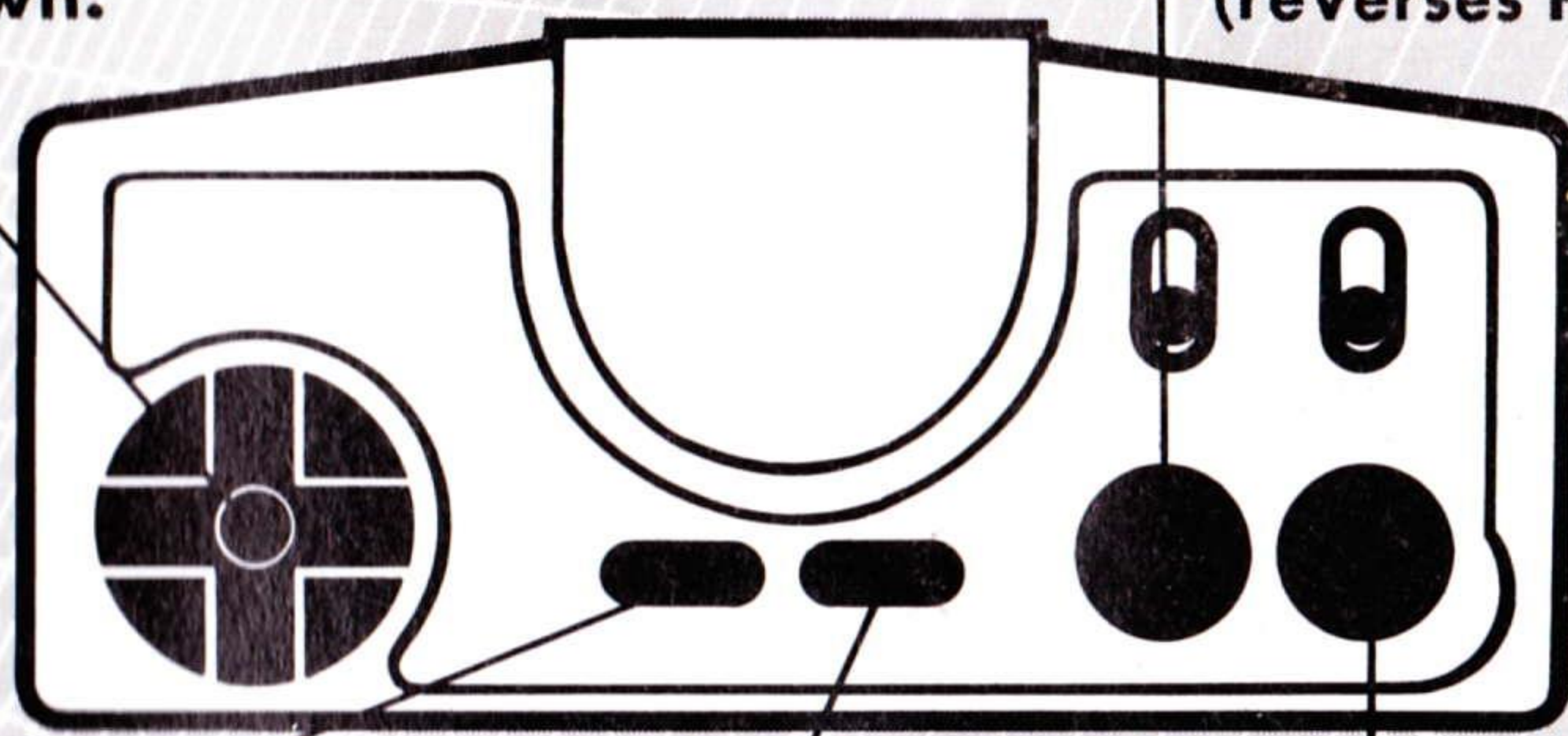
**Carrier (unit carrier)  
Wild Cat (WC)  
Carries power-up items.**



# Controlling the Movements of Hunting Dog (HD)

**Direction Key**  
Moves HD  
left, right,  
up and down.

**Button II (keep depressed):** Makes HD attack (automatic and continuous shooting).  
(Press once again): Optional operations (reverses HD to attack the enemy behind you).



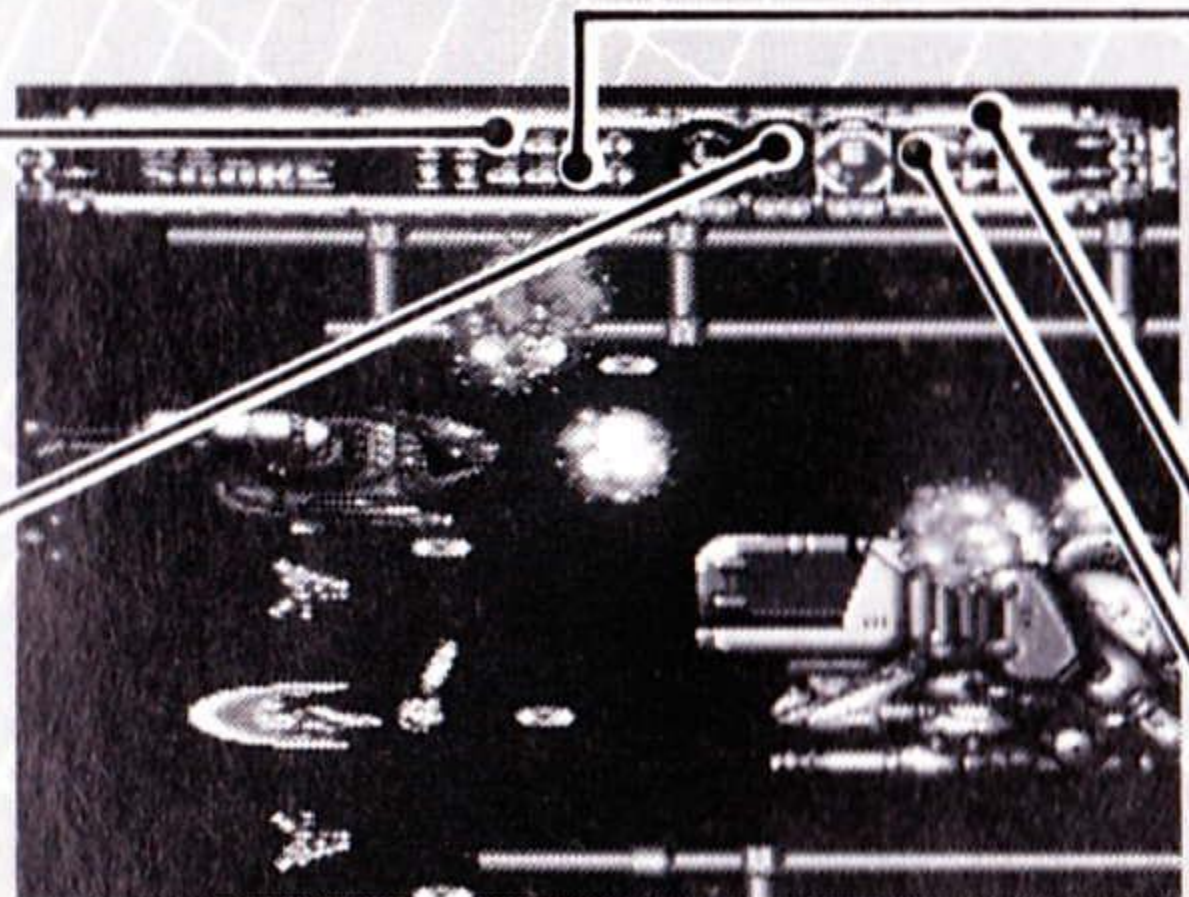
**Select Button**  
Press to select  
between 3 speed  
levels for the HD.

**Run Button**  
Press to start and to  
pause the game.

**Button I**  
Press to select  
weapon.

## Screen Displays

**High Score**



**Weapon selection display.**

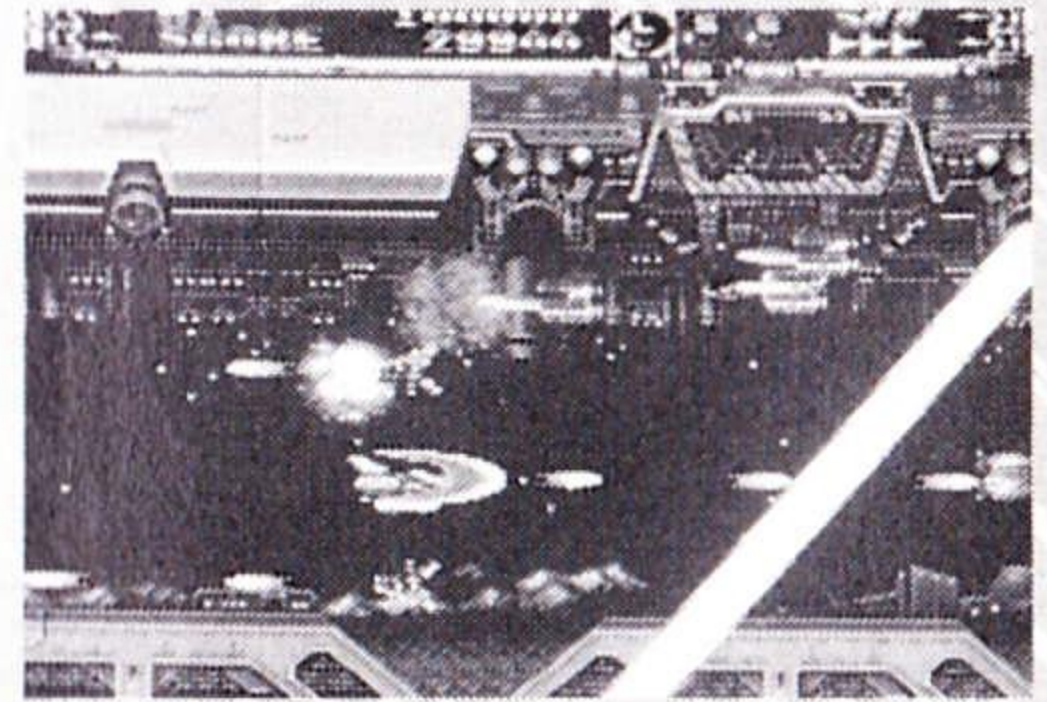
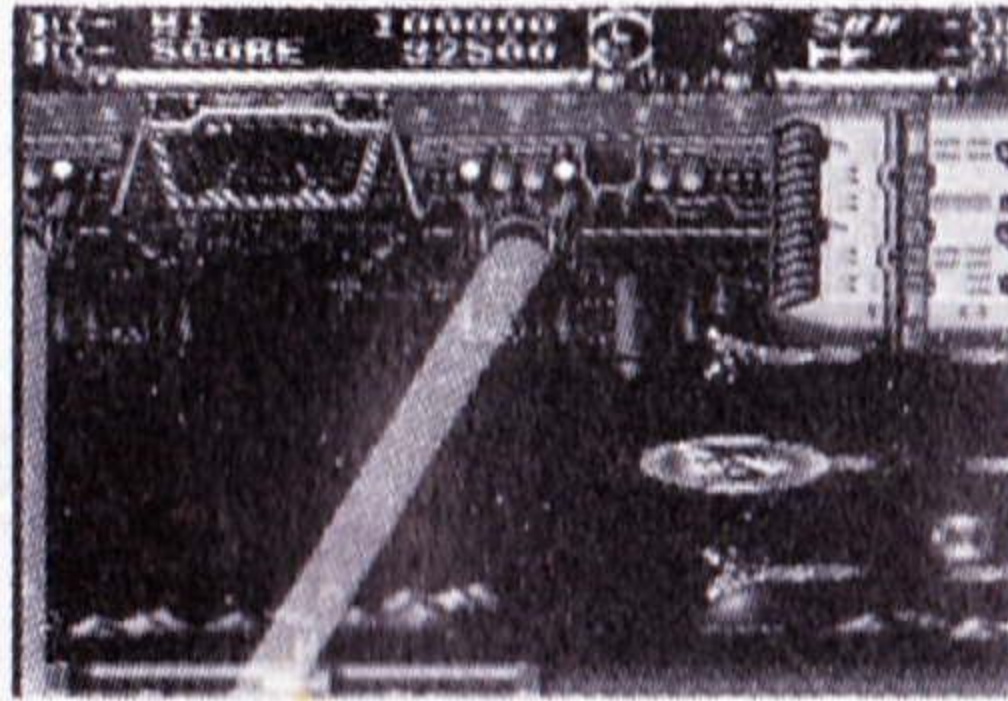
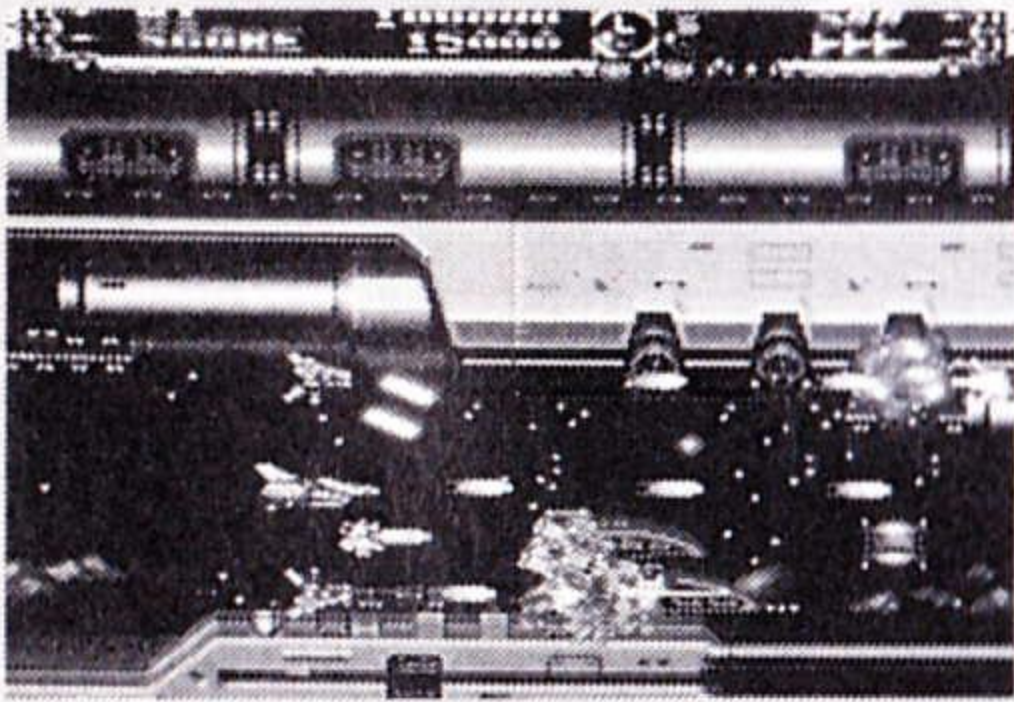
**Your score**  
(1 Up at 50,000/  
120,000/250,000/  
500,000)

**Speed**

**Ships remaining.**  
(7 Credits)

## Playing Tips

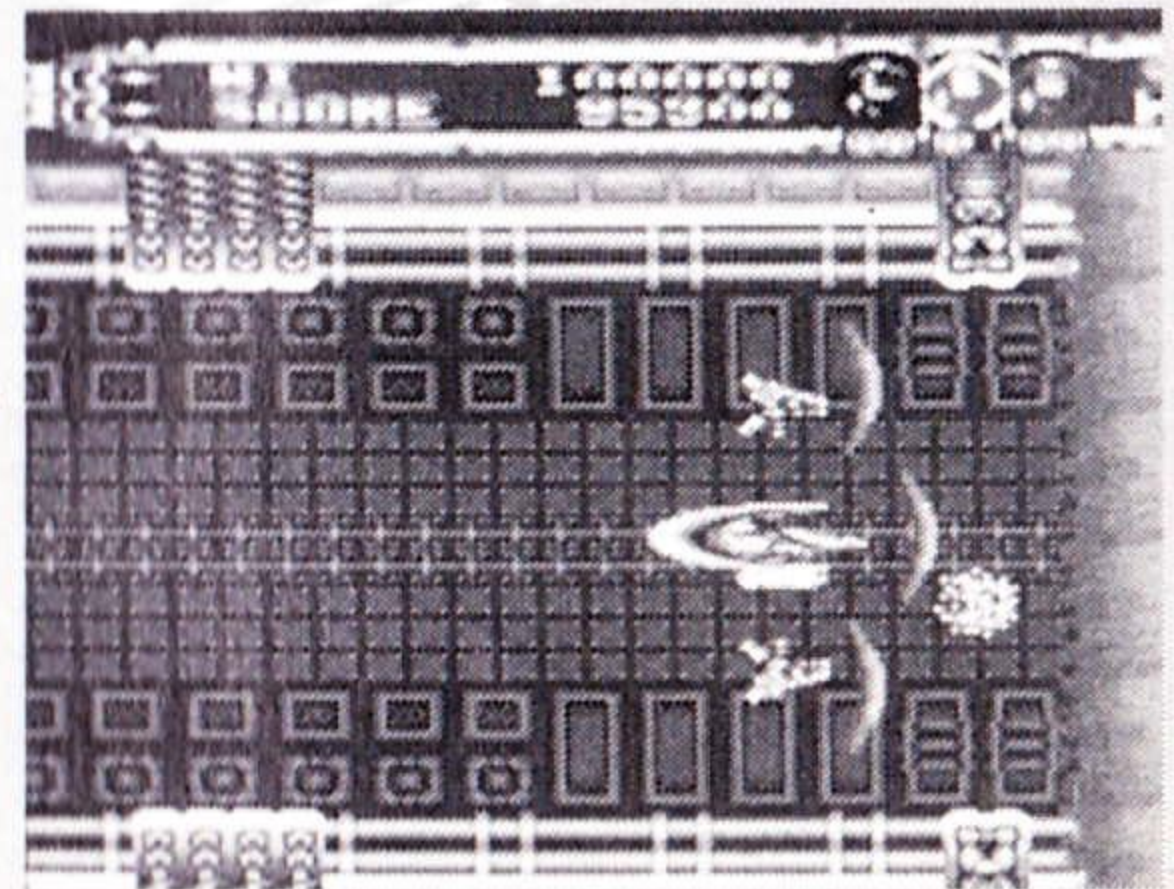
**The tip to winning is to use your weapons properly. Enemies will attack you head-on and from behind, so you must swiftly change directions and zero-in on the enemies before they get you. Use the shield! It will protect you from 3 enemy attacks. The shield will constantly appear on the screen so use it to your advantage.**



## Special Attack (Energy Blast)

**This is another feature that you'll want to use in addition to your regular weapons, since it can instantly wipe out all the enemies on the screen.**

**To create an energy blast you must wait for any of your power-ups to reach their MAX level. Then use the item with the MAX level to create an energy blast. SAYONARA! The entire enemy on the screen will be annihilated.**



# TurboGrafx™ -16 CD Game Disc 90-Day Limited Warranty

Turbo Technologies, Inc. ("TTI") warrants to the original consumer purchaser that this product shall be free from defects in material and workmanship under the following terms:

## HOW LONG IS THE WARRANTY

This product is warranted for 90 days from the date of the first consumer purchase.

## WHO IS PROTECTED

This warranty may be enforced only by the first consumer purchaser. You should save your proof of purchase, and be prepared to present it in case of a warranty claim.

## WHAT IS COVERED

Except as specified below, this warranty covers all defects in material or workmanship in this product. The following are not covered by the warranty:

1. Any product that is not distributed in the U.S.A. by TTI, or that is not purchased in the U.S.A. from an authorized TTI dealer, or that is sent for warranty service from outside the U.S.A.
2. Damage, deterioration or malfunction resulting from:
  - a) accident, negligence misuse, abuse, neglect, impact, fire, liquid, lightning or other acts of nature, commercial or industrial use, product modification or tampering, failure to follow instructions supplied with the product;
  - b) repair or attempted repair by anyone not authorized by TTI;
  - c) any shipment of the product (claims must be submitted to the carrier);
  - d) removal or installation of the product; and
  - e) any other cause that does not relate to a defect in material or workmanship
3. Any product as to which the TTI serial number has been altered, defected, or removed.

## HOW TO OBTAIN WARRANTY SERVICE

For warranty information, call 1-800-366-0136  
Monday-Friday 8:00 A.M. to 7:00 P.M. Central Time.

## LIMITATION OF IMPLIED WARRANTIES

ANY APPLICABLE IMPLIED WARRANTIES, INCLUDING WARRANTIES OF MERCHANTABILITY AND FITNESS FOR A PARTICULAR PURPOSE, ARE LIMITED IN DURATION TO THE LENGTH OF THIS WARRANTY, AND ARE SUBJECT TO ALL CONDITIONS HEREIN.

## EXCLUSION OF DAMAGES

TTI'S LIABILITY FOR ANY PRODUCT IS LIMITED TO THE REPAIR OR REPLACEMENT OF THE PRODUCT AT OUR OPTION. TTI SHALL NOT BE LIABLE FOR:

1. Damage to other property caused by this product, damages based upon inconvenience, loss of use of the product, loss of time, commercial loss; or
2. Any other damages, whether incidental, consequential or otherwise.

SOME STATES DO NOT ALLOW LIMITATIONS ON HOW LONG AN IMPLIED WARRANTY LASTS AND/OR DO NOT ALLOW THE EXCLUSION OR LIMITATION OF INCIDENTAL OR CONSEQUENTIAL DAMAGES, SO THE ABOVE LIMITATION AND EXCLUSIONS MAY NOT APPLY TO YOU.

## HOW STATE LAW RELATES TO THE WARRANTY

This warranty gives you specific legal rights, and you may also have other rights which vary from state to state.

Turbo Technologies, Inc.  
6701 Center Drive West, Suite 500  
Los Angeles, CA 90045

**Have you tried  
these other TurboGrafx™-CD  
game discs?**

- Fighting Street™
- J.B. Harold Murder Club™
- Y's III™
- It came from the Desert™

Distributed by

**Turbo Technologies, Inc.**

6701 Center Drive West, Suite 500  
Los Angeles, CA 90045

**"TurboGrafx-16", "TurboPad",  
are trademarks.**

**Gate of Thunder is  
a trademark of Hudson Soft.**

**Printed in Japan**

**TGXCD1027**

***Printed on Recycled Paper***