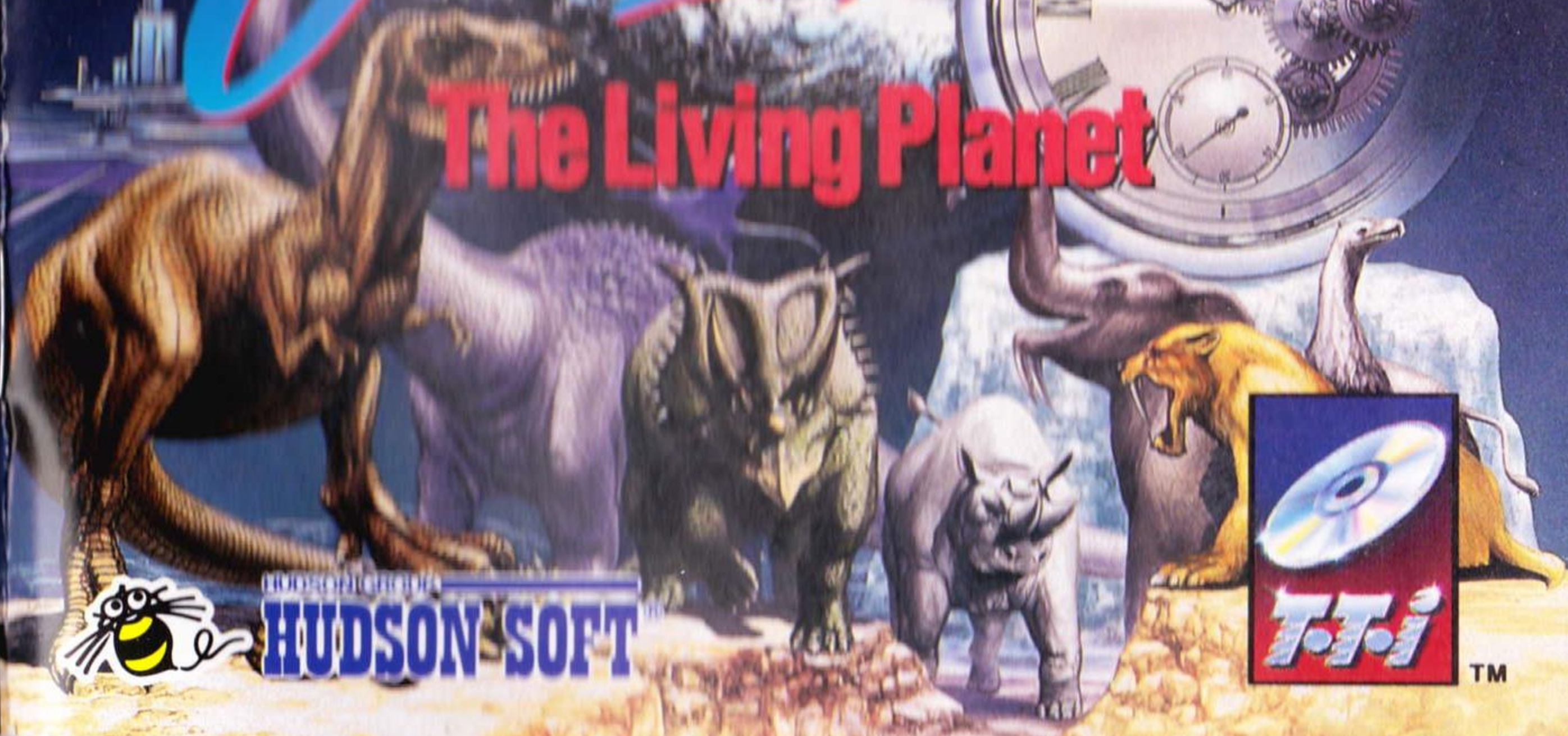




SUPER
ROM² SYSTEM

SimFouth

The Living Planet



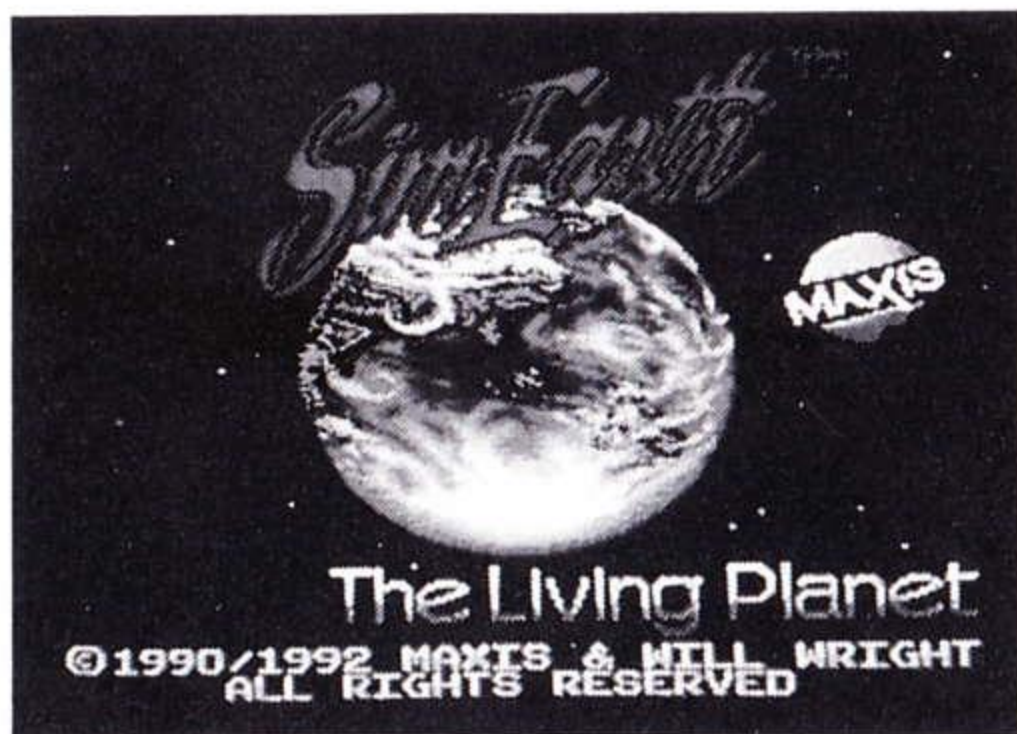
HUDSON SOFT



TM

THANK YOU !

THANK YOU for buying this Advanced TurboGrafx™-CD Game, "SimEarth™"



Before using your new game disc, please read this instruction manual carefully. Familiarize yourself with the proper use of your TurboGrafx-16 Entertainment SuperSystem, TurboGrafx-CD unit and TurboDuo™, precautions concerning their use and the proper use of this CD game. Always operate your TurboGrafx-16 SuperSystem and this CD game according to instructions. Please keep this manual in a safe place for future reference.

Game Copyright 1993 Maxis, and Hudson Soft Co., Ltd.
Published by Hudson Soft Co., Ltd.
under license from Maxis.

TurboGrafx™-CD Player
TurboDuo™

WARNINGS

- 1 This is a precision device and should not be used or stored under conditions of excessive temperature or humidity.
- 2 Do not use this CD game with ordinary CD players. The computer data may damage your audio equipment. In addition, prolonged use of this disc with headphones in a "regular" CD player could cause hearing impairment.
- 3 Never open the CD player's cover while the CD is spinning. This may damage both the disc and the system.
- 4 Never pull the System Card out while the TurboGrafx-16 switch is in the "on" position, as this may damage both the SuperSystem and the CD Interface Unit.
- 5 Do not wipe your Entertainment SuperSystem, TurboGrafx-CD player or TurboGrafx-CD with volatile liquids such as paint thinner or benzene.
- 6 Read this instruction book carefully and keep it in a safe place for future reference.

TurboGrafx-CDs are made especially for use with the TurboGrafx-16 Entertainment SuperSystem, TurboGrafx-CD player and TurboDuo™. They will not operate on other systems.

Any duplication of this software is strictly prohibited.



*SimEarth*TM

The Living Planet

CONTENTS

INTRODUCTION.....2

TUTORIAL.....5

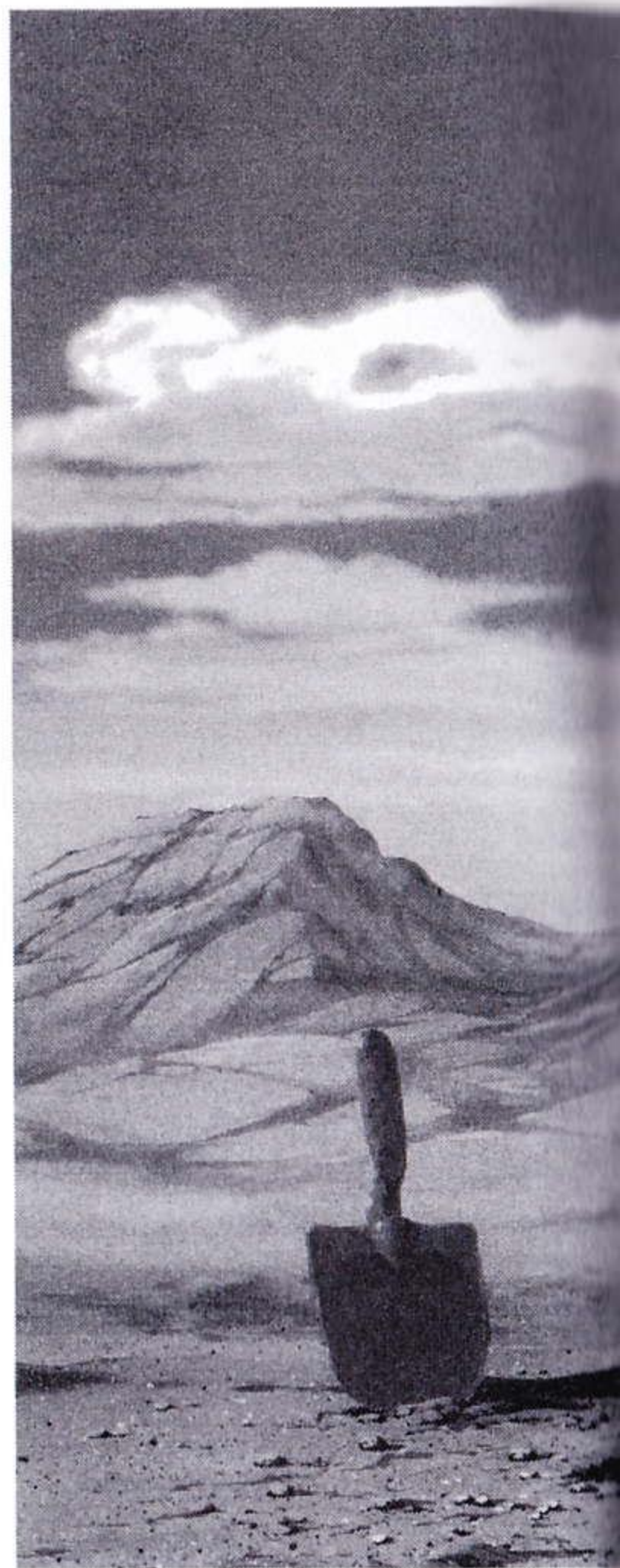
**STARTING
SIMEARTH.....15**

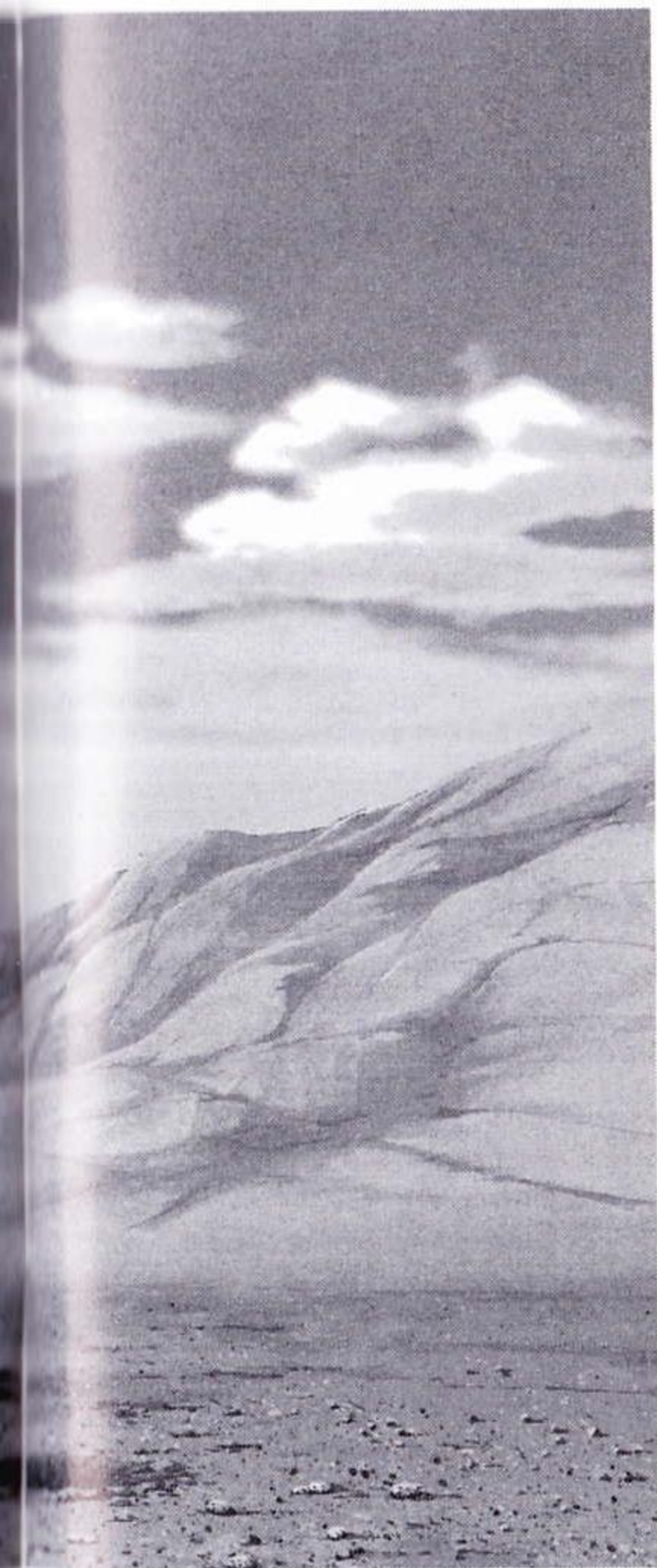
THE SCENARIOS.....47

APPENDIX.....51

WHAT IS SIMEARTH?

SimEarth is a planet simulation game, and an excellent learning tool. You have the option of choosing from a set of pre-selected planet scenarios, or designing and creating your own. SimEarth is based on the Gaia theory by James Lovelock, which says that we can look at our planet as one unit rather than a bunch of separate pieces. This is because the Earth's atmosphere, biomes and land all affect each other.





Gaia theory talks about the evolution of the Earth. Species of organisms are chosen by natural selection and events like the development of rocks, air and oceans happen in a process that links them closely together. In this theory the living organisms work with the environment around them to form a system that is able to control climate and atmospheric composition. The Earth, in fact, becomes a living organism.

WHAT IS GAIA?

SimEarth™





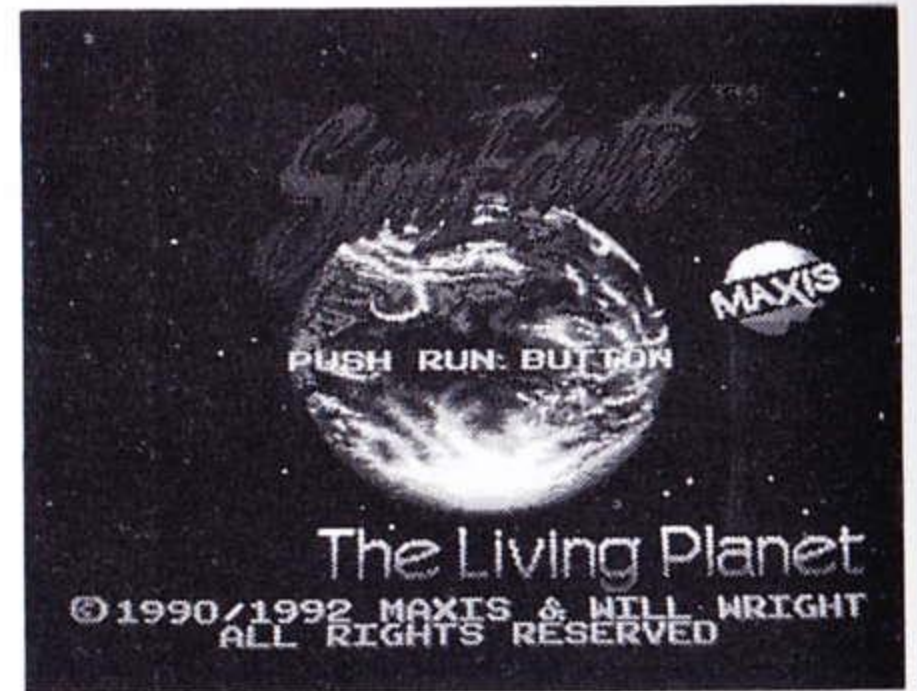
TUTORIAL

SimEarth™

SIMULATIONS

Because SimEarth is a simulation game, you are given a set of rules and tools that describe, create and control a system. The system in this case is a planet. You are free to do whatever you like as long as it's within the rules.

This means that you can create some really cool scenarios.





There are four levels of play to choose from in SimEarth. Experimental mode gives you unlimited energy so you can do just about anything you want. Easy mode gives you a maximum of 5000 EUs (energy units) to work

with. In Average mode you only get 2000 EUs. And in Hard mode, you get your 2000 EUs, but Gaia isn't there to give you a hand. You, the player, create the planet with the energy provided. A good place to start is in the Experimental mode.



You can choose from eight planets on the Planet screen. Each of these planets is unique because they have different time scales, environments and features. Swim around on Aquarium or fry on Venus.

THE LEVELS

THE PLANETS

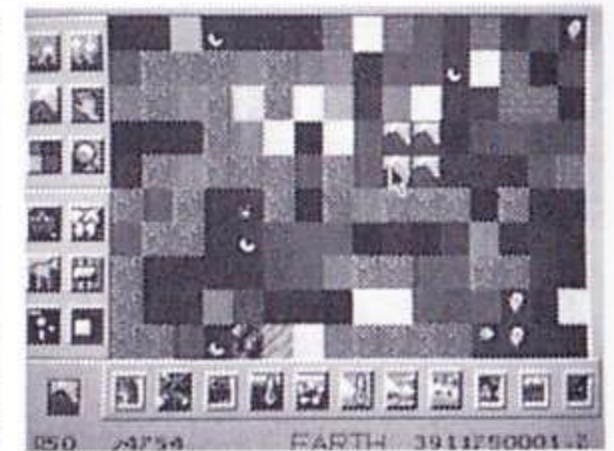
CREATING CONTINENTS

DISASTER BUTTON



Select the Disaster Button from the left Control Panel. Choose Volcano, then move the cursor onto the screen and press Button I.

Colored squares pop up. This is the land that your volcanic blast made. Keep this up until you have as much land as you want.

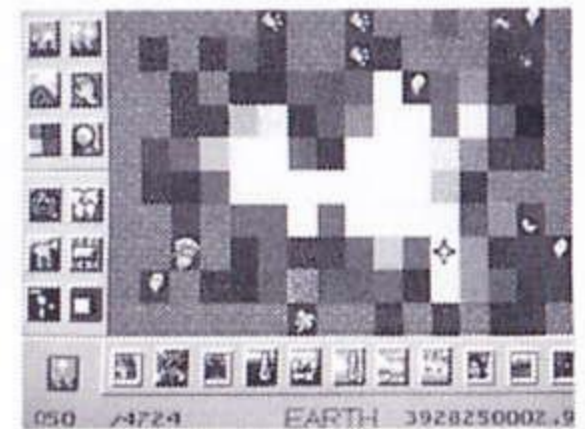
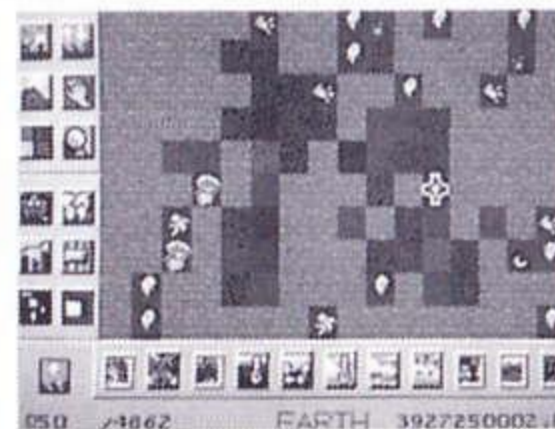
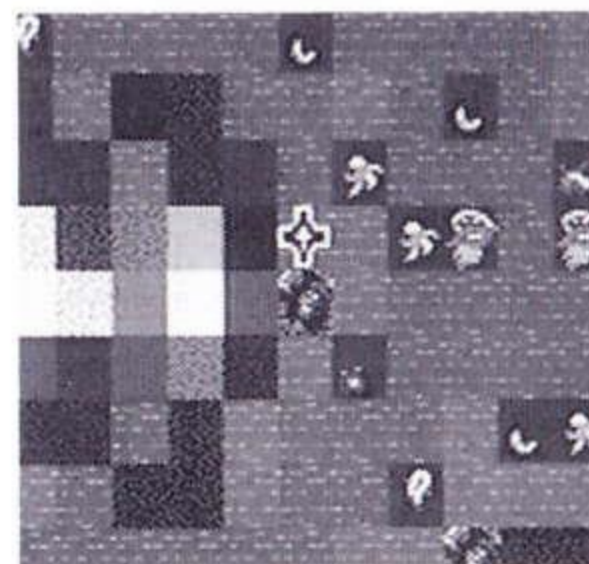


CHANGING CONTINENTS

ALTITUDE BUTTON

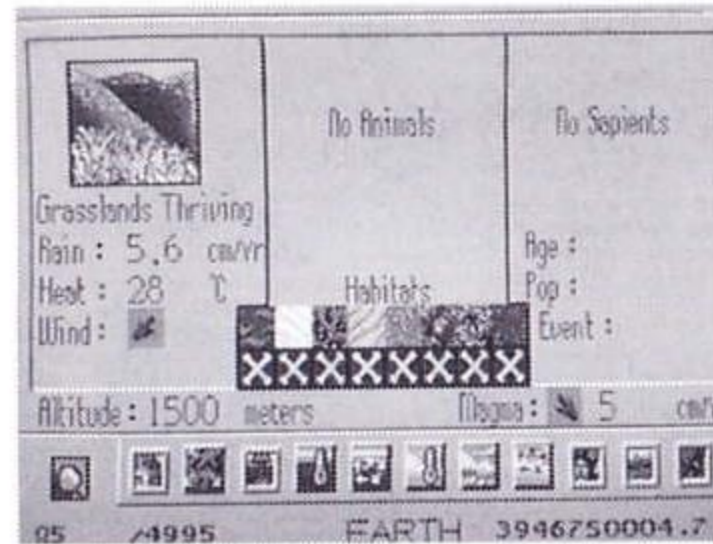
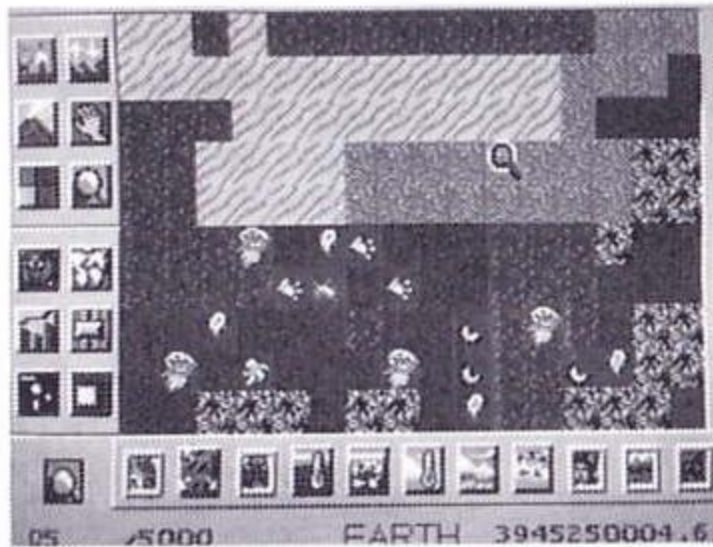


Raise or lower your land. Mold it like clay into any shape you want. Try making mountains that reach to the sky, or ocean trenches where no light will ever shine.



The magnifying glass gives you the goods on many interesting and useful things. If you are interested in finding out what is going on at any location, move the glass over the square and access the Examination screen.

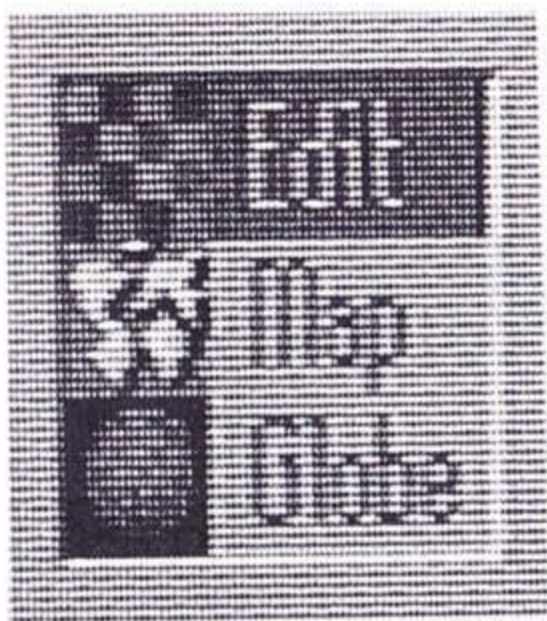
EXAMINE BUTTON



OBSERVING YOUR PLANET

There are four main screens in SimEarth - Edit, Map, Globe and Gaia.

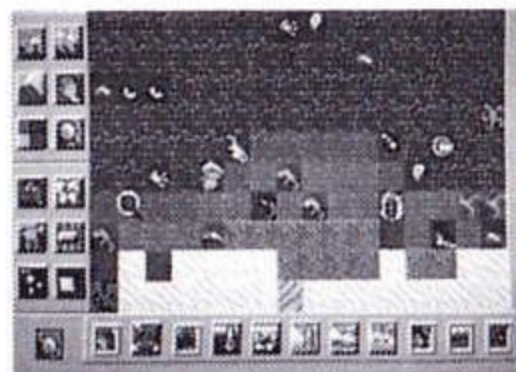
SCREEN BUTTON



Use the Main Screen Menu to access Edit, Map, and Globe screens, or Select Button to move through all screens. Information from the Data Display Buttons can appear on all screens except Gaia.

SELECTING THE SCREENS

SELECTING THE SCREENS



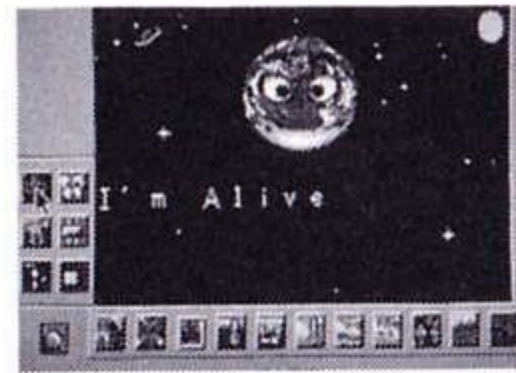
Edit screen



Map screen



Globe screen



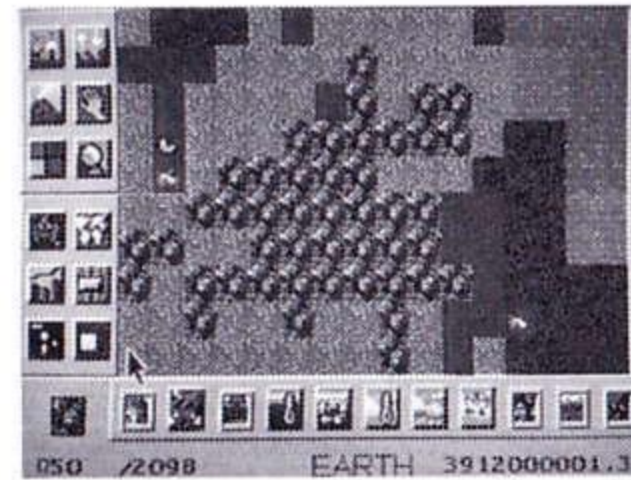
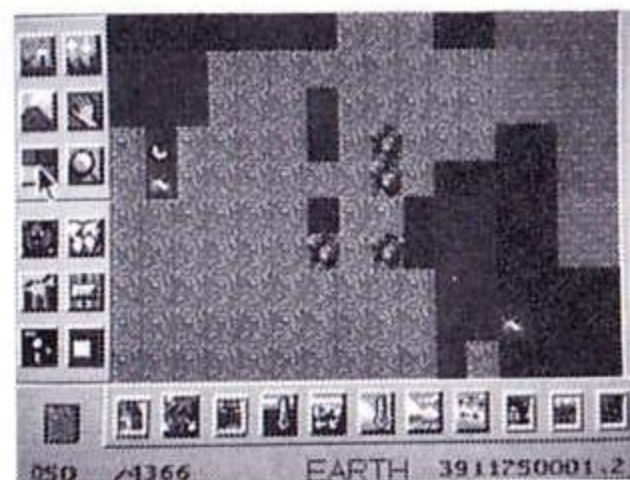
Gaia screen
(with Select Button)

PLACING PLANT AND ANIMAL LIFE

BIOME **BUTTON**



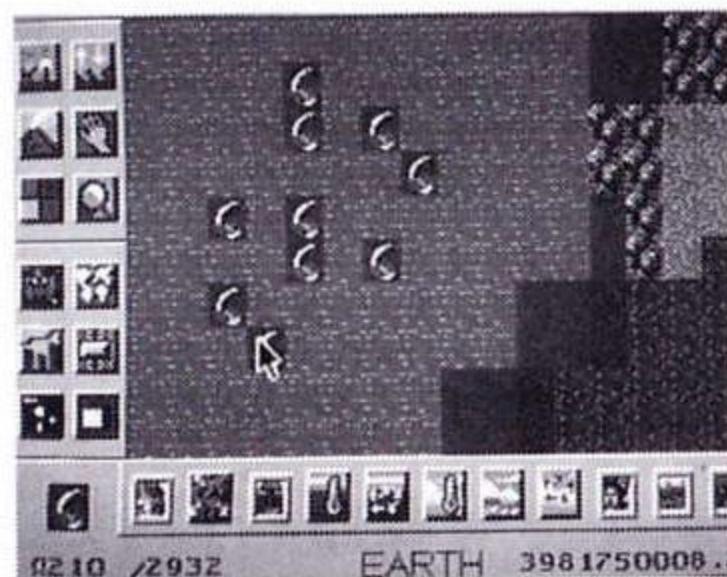
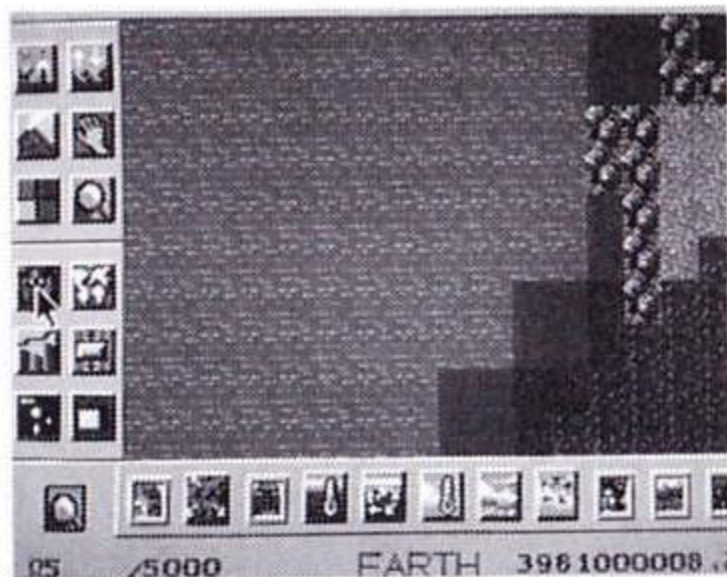
Ice cold, boiling hot or just right. The biomes (ecological communities) on your planet will change drastically depending on their environment. If your biomes feel comfortable with their surroundings they grow like crazy. If not, they will shrivel, melt or blow away.



Call up the Life Menu. The first column contains sea life; the second column land life. The life forms must adapt to their surroundings or they will become extinct. For example, throwing a dinosaur into the middle of the ocean might not be too good for its health.

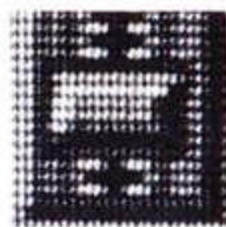


LIFE BUTTON

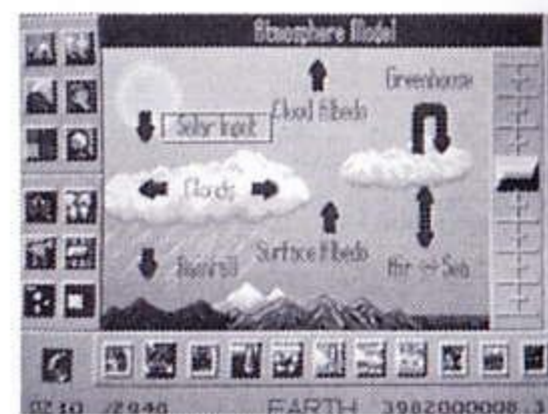


THE ENVIRONMENT

MODEL BUTTON



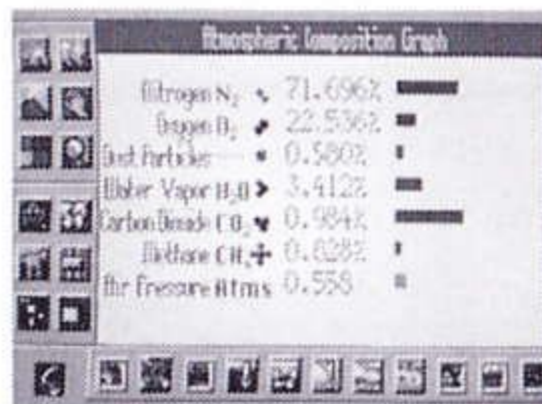
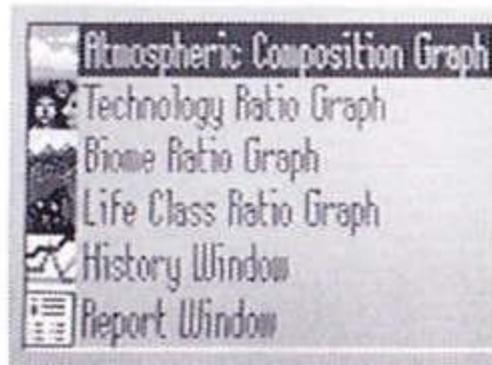
You have four selections to choose from when the Model Menu is accessed. These screens allow you to make changes to your planet in the following areas: Geosphere, Atmosphere, Civilization and Biosphere.



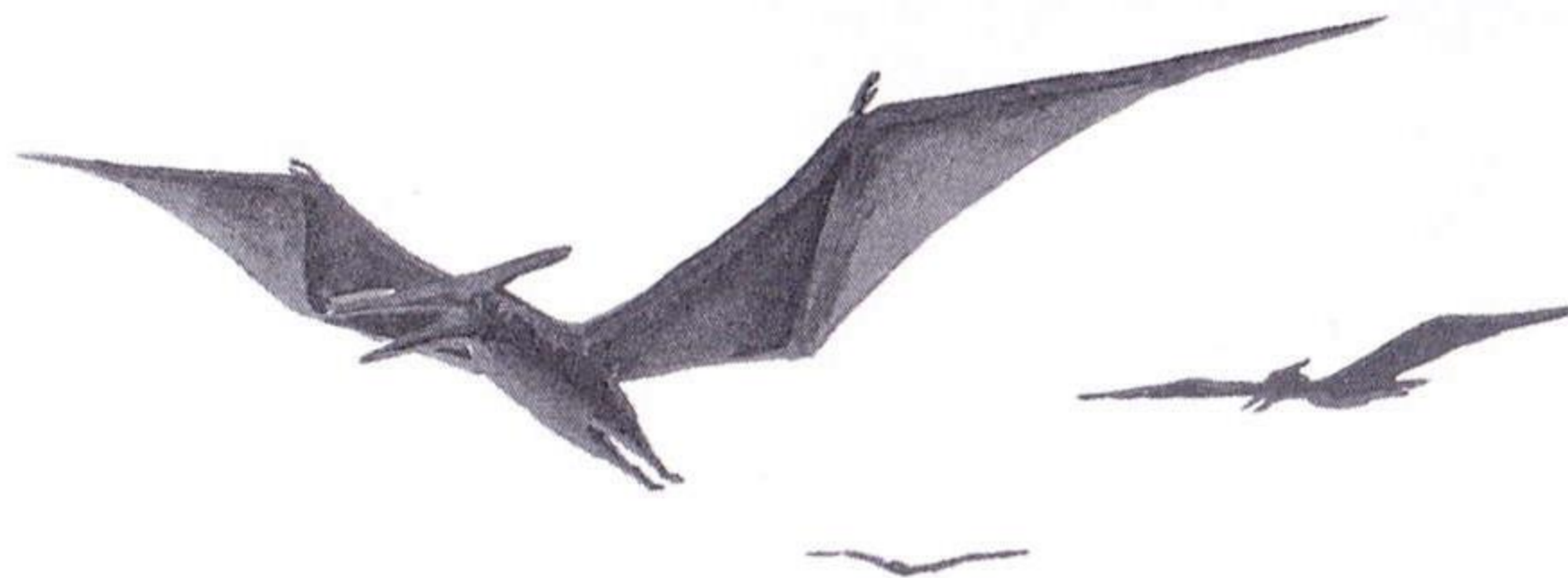
GRAPH BUTTON



There are six graph screens that can be accessed through the Graph Button. These graphs are an excellent way to analyze different kinds of information because they give a clear picture of what is occurring on your planet.



There are eight great scenarios to choose from, each of them offering something special in the way of SimEarth entertainment. Even though there are goals, there is no actual 'end' to the scenarios. In other words, there is no 'victory'. In SimEarth you can do whatever you want.... but have fun doing it!



ENJOYING SIMEARTH

SimEarth™

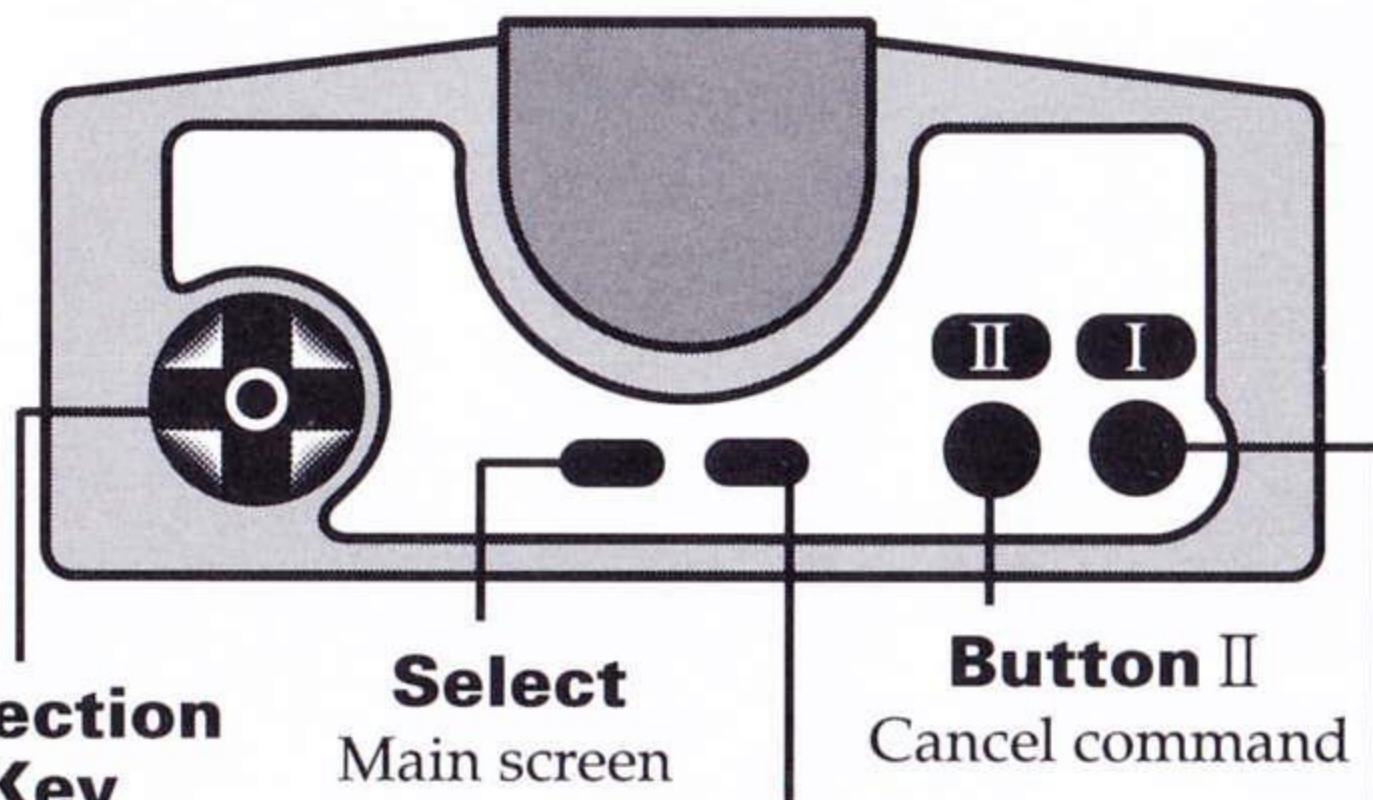




STARTING

SimEarth[™]

JOYPAD CONTROLS



**Direction
Key**

Press to move
cursor

Select
Main screen
cycle

Run
Pause

Button II
Cancel command

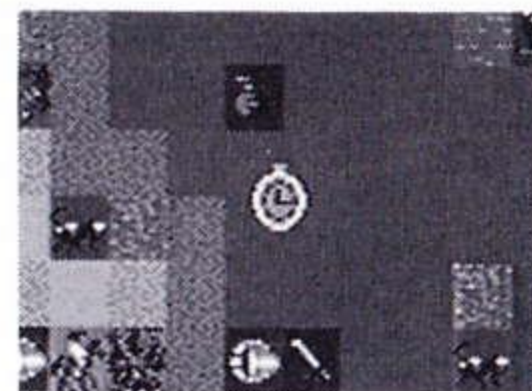
Button I
Start action

THE WATCH

A watch pops up on the screen when the CD is reading data or in Pause Mode.

PAUSE

The watch doesn't blink.



READING

The watch blinks on and off.



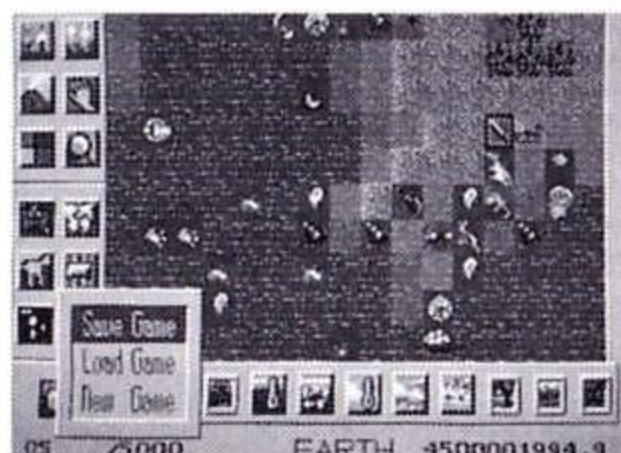
To start the game press 'Run' on the Title screen. If there is a game saved you will have the option of continuing that game.



To view the opening sequence leave the Title Screen alone. In other words - Don't press anything! A sweeping, panoramic vision of the world from prehistoric to modern times moves across the screen. It's like a movie!



Call up the SAVE/LOAD Menu to save or load your game. You can call this window up from any main screen and save one planet.



One planet takes up all the file Cabinet memory.



*If you have data from other games and you save SimEarth, the data from the other games will be erased.

STARTING SIM EARTH

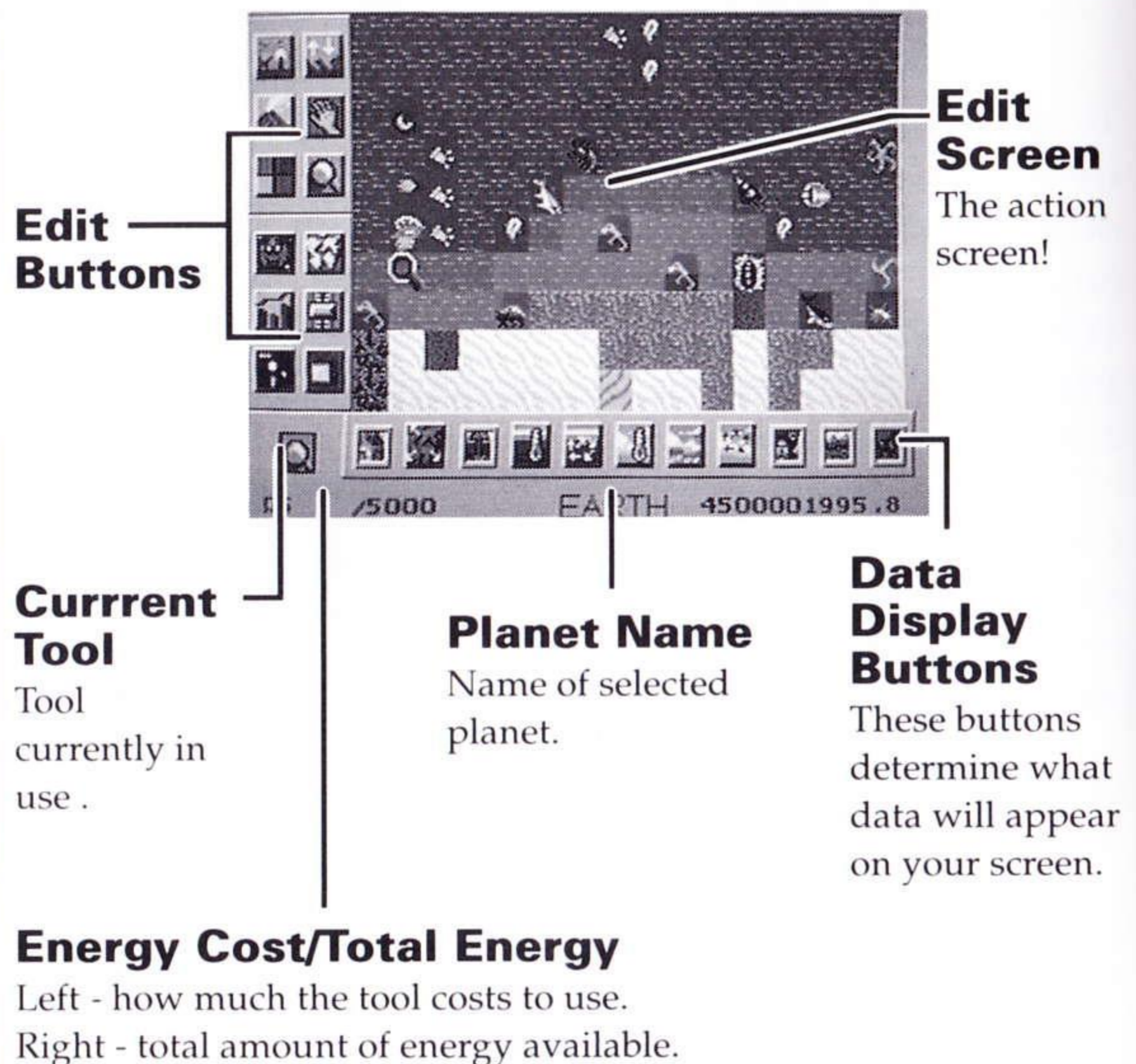
OPENING SEQUENCE

SAVE/LOAD

DISPLAY SCREENS

SimEarth uses a total of four main screens. The following pages give examples of these screen types.

EDIT SCREEN



This screen gives you an overall picture of your planet.

THE EDIT RECTANGLE

Drag the edit rectangle with Button II, then press Button I to access Edit screen.

This is it! The whole show is right before your eyes. And it even spins around.

Is your planet happy or sad? Healthy or sick? Find out on the Gaia screen.



MAP SCREEN

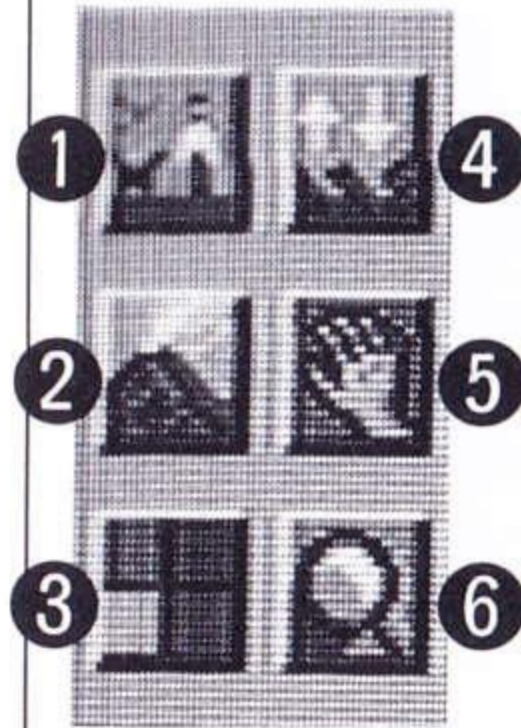


GLOBE SCREEN



GAIA SCREEN

EDIT BUTTONS



Further explanations and uses of the buttons will be given in these pages.

1. LIFE TOOLS



Choose the life tool you want to place on your planet. There are four groups that can be divided as follows: Sea

life, Land life, Cities and Terraformers. The amount of energy each one costs is different.

2. DISASTER TOOLS

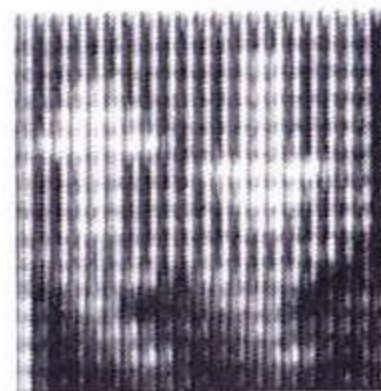
When you want something catastrophic to occur on your planet choose one of these tools. They are capable of building or destroying large sections of your planet. The EUs used are the same for each tool.



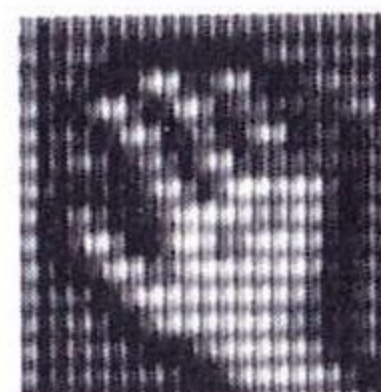


Rocks? Ice? Swamp? Choose from these and many more in the Biome Menu.

Haul out the shovel and start piling up the dirt. Or how about digging down deep into the sea? Make sure the arrow is pointing in the direction you want to go.



You can carry life-forms, plant life and cities to anyplace you wish. And when disaster strikes use it to move things out of the danger zone.



Get tons of in-depth information about any area you put the magnifying glass on. The Examine screen pops up and tells you lots of things about that location.



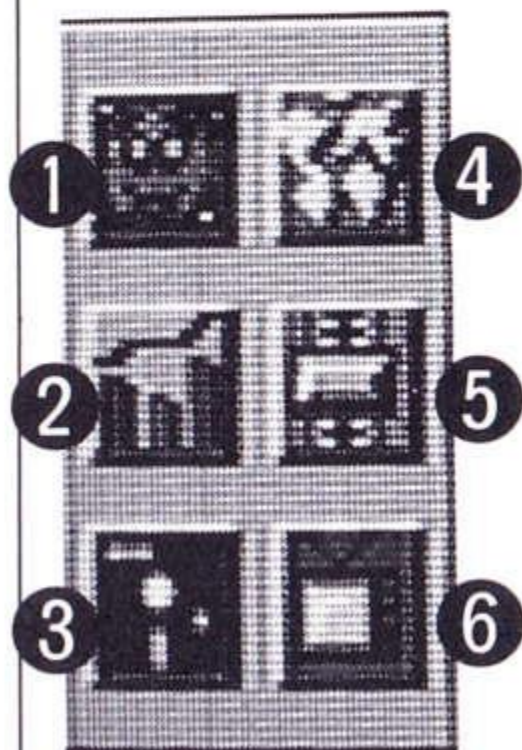
3. BIOME TOOLS

4. ALTITUDE TOOL

5. MOVE TOOL

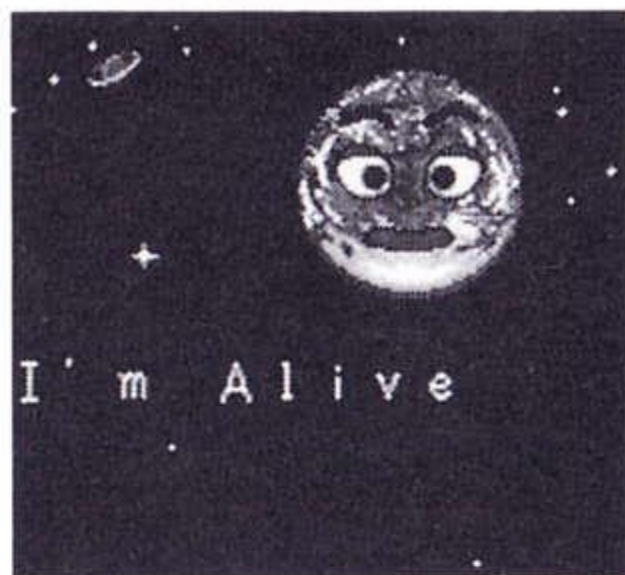
6. EXAMINE TOOL

SYSTEM CONTROL BUTTONS



These buttons access screens and menus.

1. GAIA SCREEN

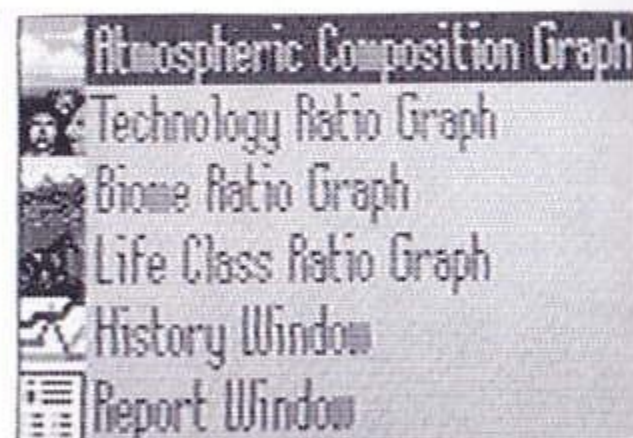


Gaia loves to give advice. He will tell you how he is feeling and what makes him tick. Listen and learn.

Note: After seeing his advice, use Select Button or Main Screen Menu to return to one of the main screens.

2. GRAPH MENU

To get specific information on your planet call up one of the graphs. They show the present state of the planet in real time (ie. the graph changes when conditions change).



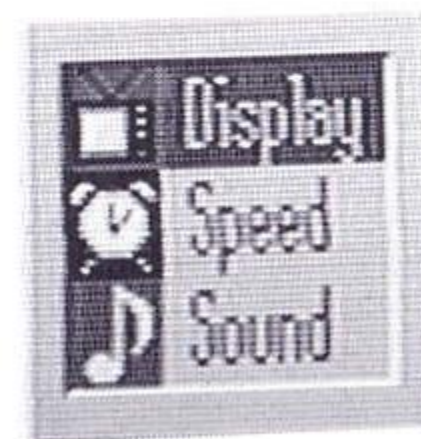
You can quit the game you are playing and change to a new planet, but you must 'Save' first if you want to continue later.

Note: Only one planet can be saved at a time.

There are a total of four main screens. Use this menu to access one of these screens, or if you are in one of the four main screens and you want to access another one, just press Select Button.

Each model screen has important variables which affect how your planet functions. Adjust solar input, reproduction rate, etc.

- You can set three types of options.
- change screen position
 - set speed (fast, moderate, slow or pause)
 - turn sound effects/music on or off



3. SAVE/LOAD MENU

4. MAIN SCREEN MENU

5. MODEL CONTROL MENU

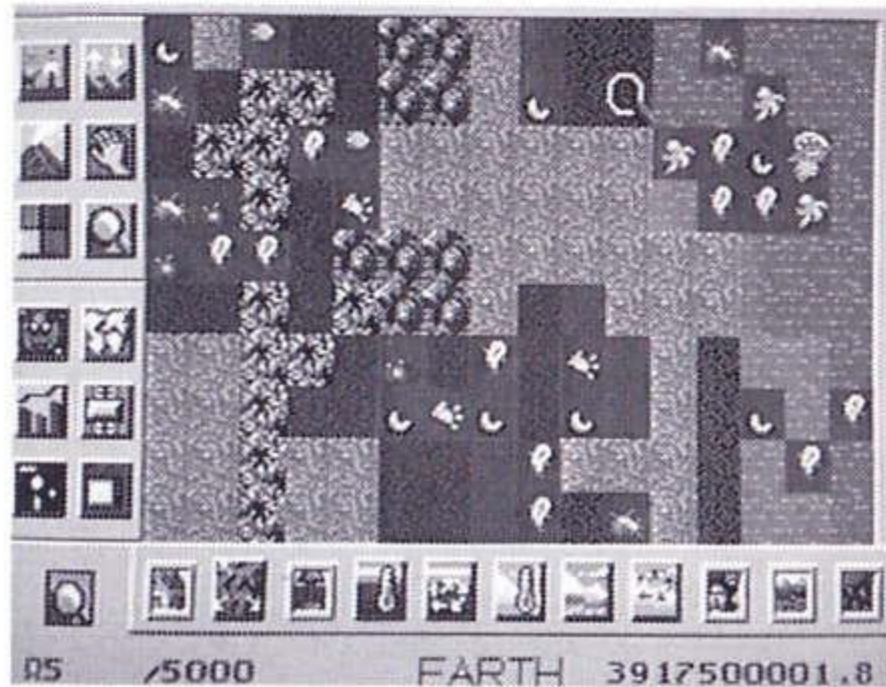
6. OPTION MENU

THE BUTTONS

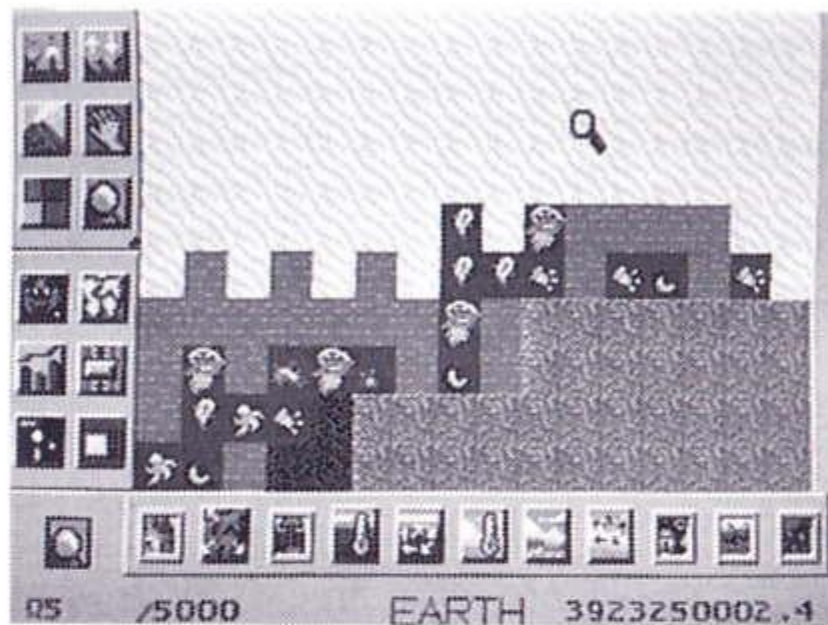
MAKE IT HAPPEN

EXAMINATION BUTTON

You need to use the buttons in SimEarth to progress with the game. The following are explanations for each button.



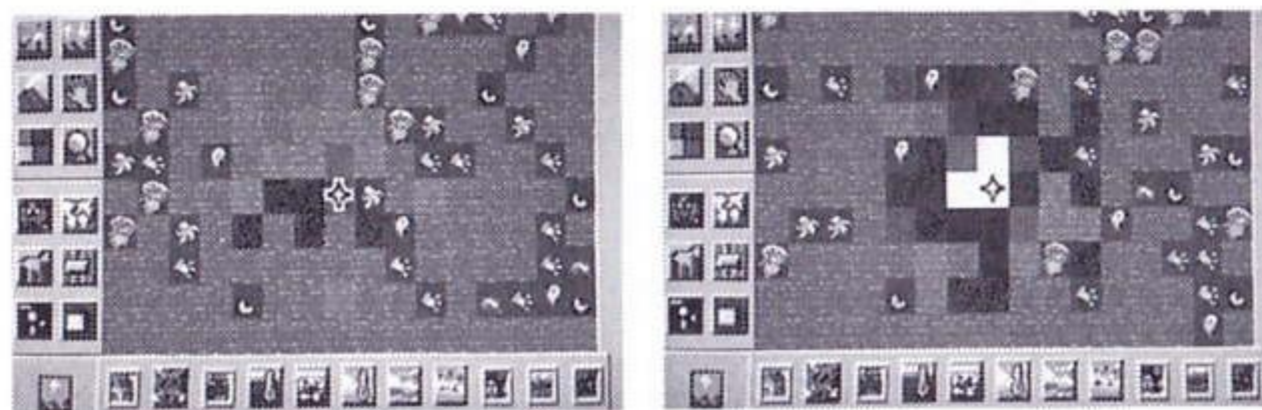
The left-hand side of your screen is full of buttons that can be accessed for information or anything that works on the screen. They are a perfect way to get things done in a hurry.



Call up information from the Edit screen using the magnifying glass. Move the glass over the area you want to know about and press Button I to call up the Examination screen. Try it anywhere you want.

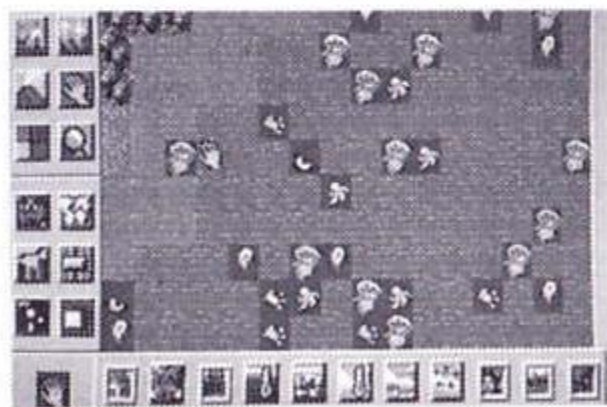
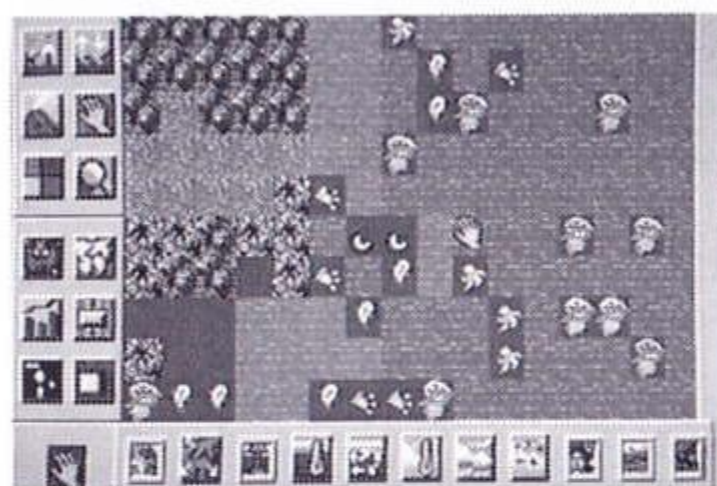


Raise or lower land with the Altitude Tool. Choose from the 'raise' and 'lower' modes using Button I. Move the cursor over the screen and press Button I to see your land change. The brighter the land the higher it is; the darker the land the lower it is.



Pick up life-forms, plants, or cities and move them wherever you want. It might be a good idea to take a look at the surroundings of the new area before transplanting anything.

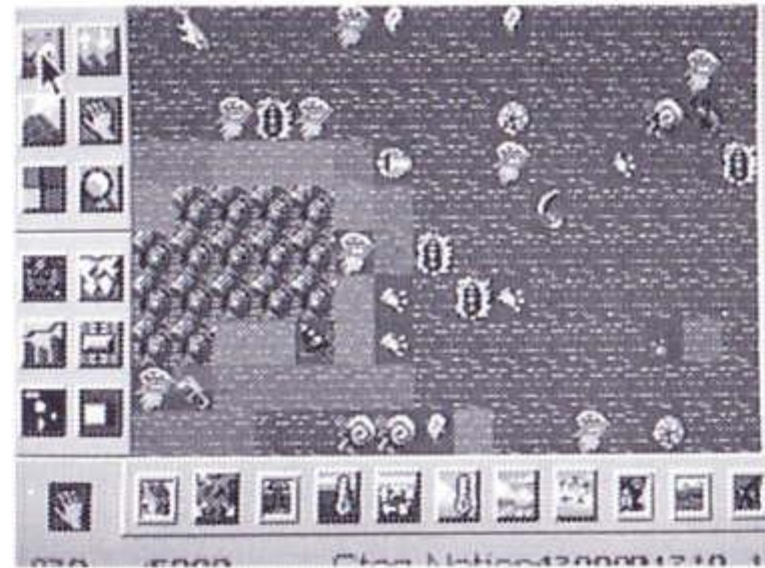
And one more thing: In case of fire....run!!



ALTITUDE BUTTON

MOVE BUTTON

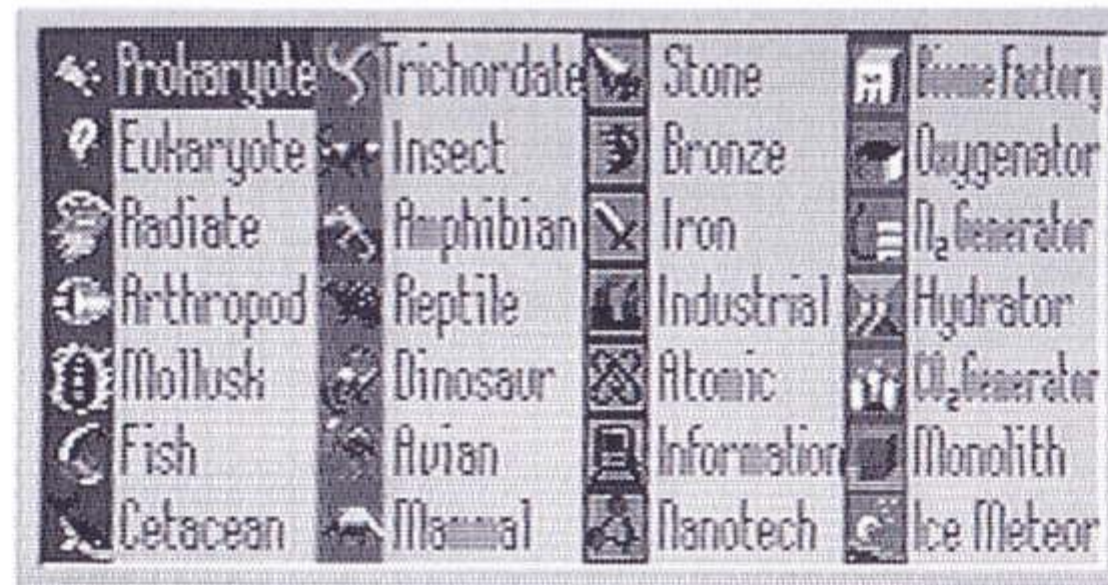
LIFE BUTTON



Place life-forms, cities, and terraformers (for Mars and Venus) on your planet. Call up the Life Menu and choose a tool. Lay it on the screen and observe the results (if there are any, that is).

Remember: the EUs used for each choice are different.

THE FOUR GROUPS



A Sea Life

Put your sea life in the oceans and lakes and watch them take off. (Check table for EUs.)

B Land Life

Hopefully, these life-forms will grow and prosper in the wonderful, all-natural land you created.

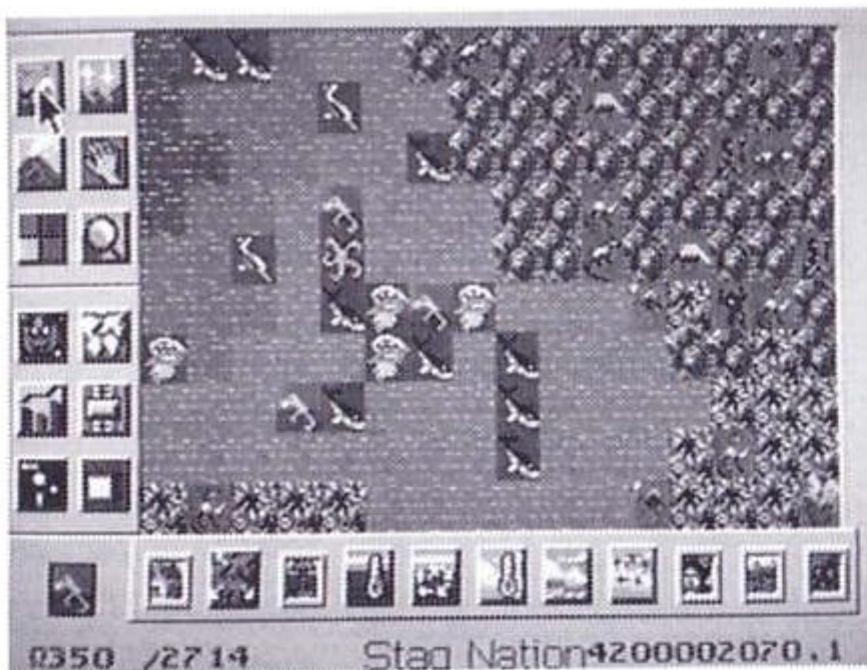
C Cities

There are a total of seven kinds of cities. The time scale must be right in order for some of them to make it.

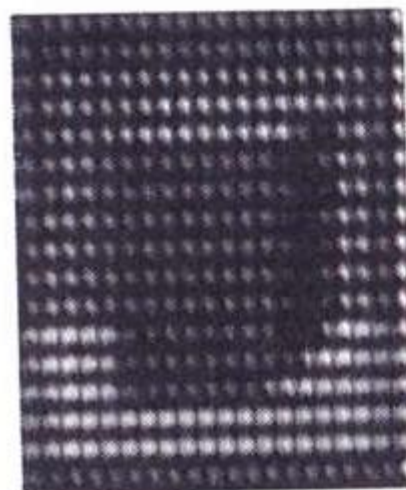
D Terraformers

These are used to change conditions on Mars and Venus into an Earth-like paradise. They keep working until you blast them with meteors, fires or volcanos.

If the life-form adapts to its surroundings it will begin to multiply. If not, it will die off. Sometimes life-forms cannot be placed because they are out of their time scale.



The Monolith is like a super evolution machine. Place it on an animal or city and if the conditions are right there's a chance the life-form will advance right away.



Prokaryote 35	Trichordate 280	Stone 500	Biome Factory 500
Eukaryote 70	Insect 315	Bronze 1000	Oxygenator 500
Radiate 105	Amphibian 350	Iron 1500	N₂ Generator 500
Arthropod 140	Reptile 385	Industrial 2000	Hydrator 500
Mollusk 175	Dinosaur 420	Atomic 2500	CO₂ Generator 500
Fish 210	Avian 455	Information 3000	Monolith 2500
Cetacean 245	Mammal 490	Nanotech 3500	Ice Meteor 500

LIFE-FORM SURVIVAL

THE MONOLITH

DISASTER BUTTON



To get things moving on your planet use the choices from the Disaster Menu and choose your destructive force. They all cost 50 EUs.

A Hurricane

Rip things up and dump tons of water with the hurricane.

B Tidal Wave

Cause damage with a massive wall of water. It occurs naturally along with hurricanes and earthquakes.

C Meteor

Smash the Earth with this big rock from the sky. When it hits the Earth it makes a crater; when it hits the water it causes a tidal wave.

D Volcano

Spew molten lava all over and help to build more land and continents. Be careful, since the ash in the atmosphere blocks sunlight, and could cool your planet.

E Atomic Detonation

Blow things up big time and then watch things disappear from radiation fallout. You can even start a nuclear winter.

F Fire

When this scorching fire is used the O₂ levels are affected. It destroys plants and life-forms.

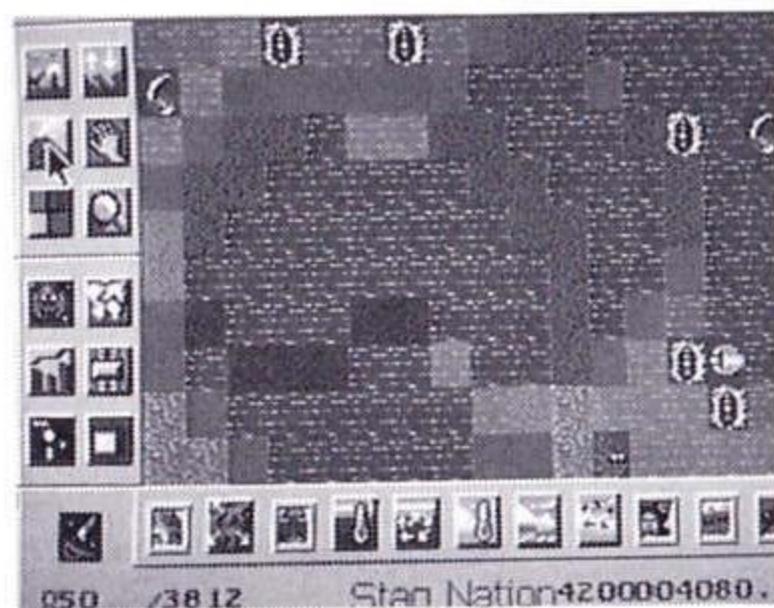
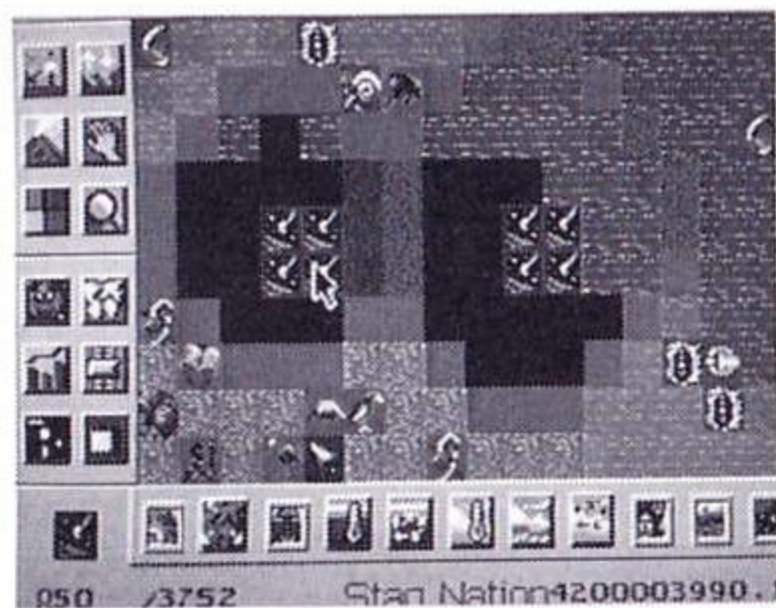
G Earthquake

Split the Earth. Choose the direction of your earthquake to form mountain ranges or supercontinents.

H Plague

A killer disease. Wipe out all life-forms and civilizations that get in your way.

You can use disasters as many times as you like to either build up or utterly destroy the planet. Other disasters include war and pollution. This is a great opportunity to learn about the power of nature.



HOW TO USE DISASTERS

BIOME BUTTON

**A**

Use this button to place biomes on the Edit Screen. For the biome to survive and grow it must be placed in a suitable environment. Call up the Biome Menu, choose a biome and see what happens.

B**A Rock**

Just solid rock, but if the biomes in the area are strong enough they can take the rock space over.

C**D****E****F****G****H****B Arctic**

This biome likes cold, dry surroundings. No animals can survive on it.

C Boreal

Lots of rain and low temperatures help boreal thrive. Many types of animals can survive in this area.

D Desert

Scorching hot and almost zero rain. This is the desert biome.

E Grass

Grass spreads well in moderate climates with average rainfall. Great for the development of civilizations.

F Forest

This forest grows best in moderate climates with major amounts of rain. Most life-forms like the forest atmosphere.

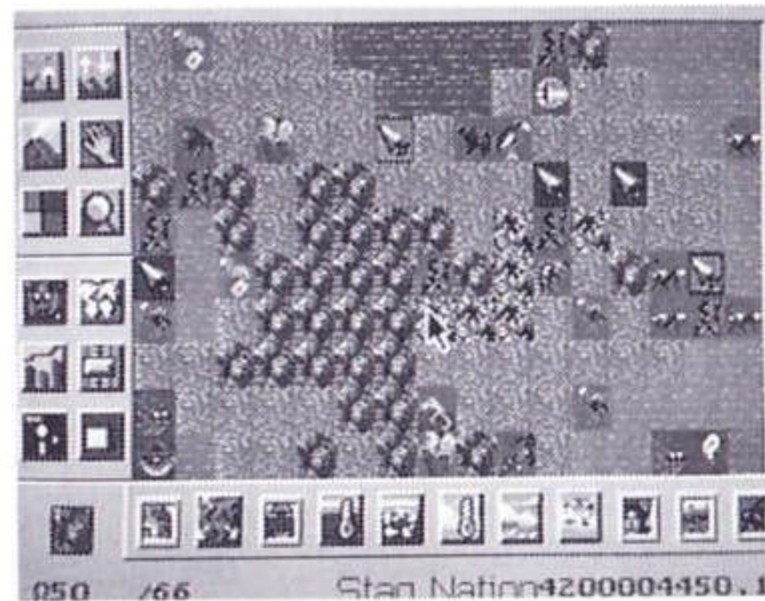
G Jungle

Hot and wet is what the jungle is all about. It holds lots of important nutrients that the Earth needs.

H Swamp

It came from the swamp! This biome likes hot climates with moderate rainfall. Some sea-life can even survive here.

Make sure that the area you want to place your biome is suitable for the biome. Maybe checking the temperature would help. If, however, the biome doesn't adapt to its surroundings it will fade away to oblivion.



HOW TO USE BIOMES

GEOSPHERE MODEL



This Model Control Panel deals with all the factors relating to the Geosphere, Meteor Impacts, and the Axial Tilt of your planet. Choose an element, then press and hold Button I and use the Direction Key

to slide the Control Bar up or down. The arrow located beside the element grows larger or smaller, indicating an increase or decrease in that element's activity level.



1. VOLCANIC ACTIVITY

On the high setting you can use volcanos to shape continents. It's up to you, but at the beginning of your planet it may help if you put it on full power.

2. EROSION

This setting deals with the forces that break down the surface of the Earth (eg. rain and wind). Increasing erosion also increases the amount of CO₂ in the atmosphere and builds up continental shelves.

3. CORE HEAT

You can change the temperature of your planet's core. If you want really big volcanos just turn the Core Heat up.

4. CONTINENTAL DRIFT

Get your continents to either creep along at a snail's pace or split apart quickly.

5. CORE FORMATION

With Core Formation turned up you can slow down the rate at which your continents drift. If it's turned down then your continents will slide right along.

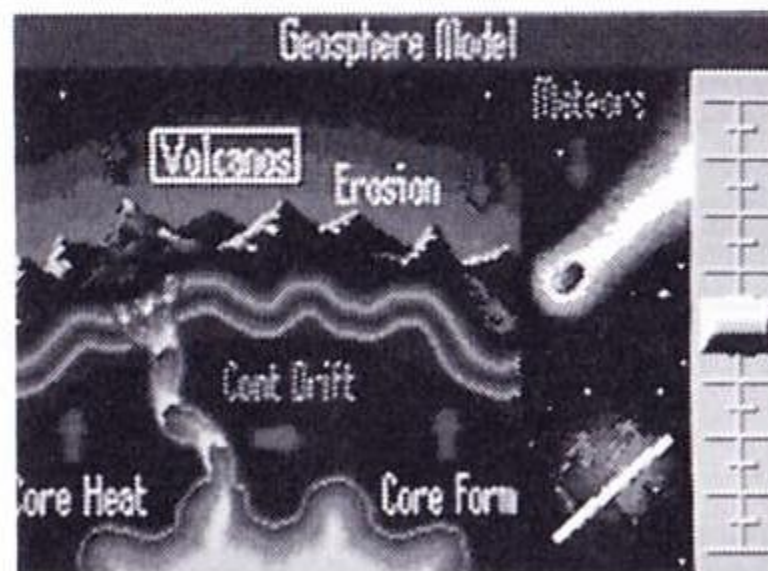
6. METEORS

Smash apart your planet and help build up your continents. As your planet advances they'll be needed less and less.

7. AXIAL TILT

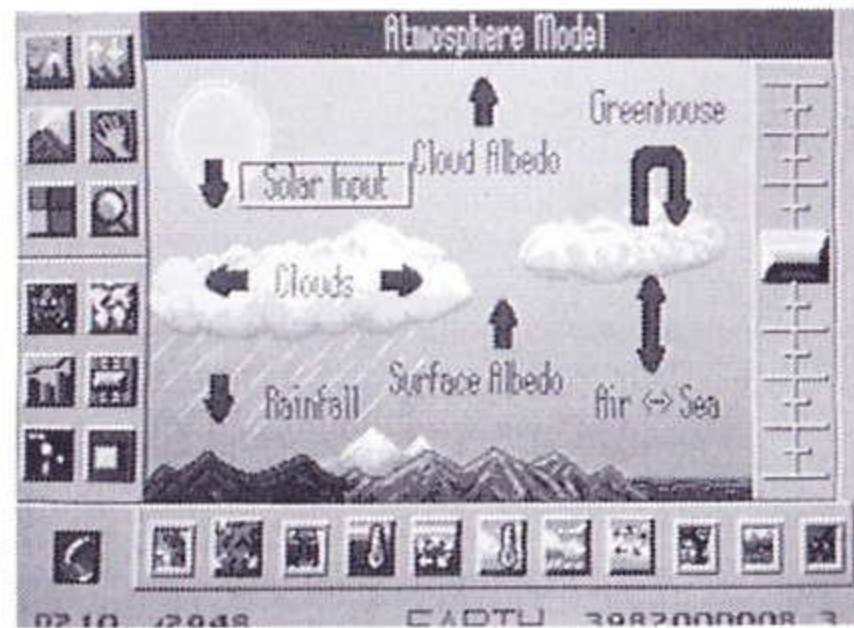
This setting affects how severe your seasons will be. The greater the tilt, the greater the seasonal extremes.

Magma (molten rock) is very important in the formation of your planet. In order for the magma to flow freely you can turn up the Core Heat, the Volcanos or both!

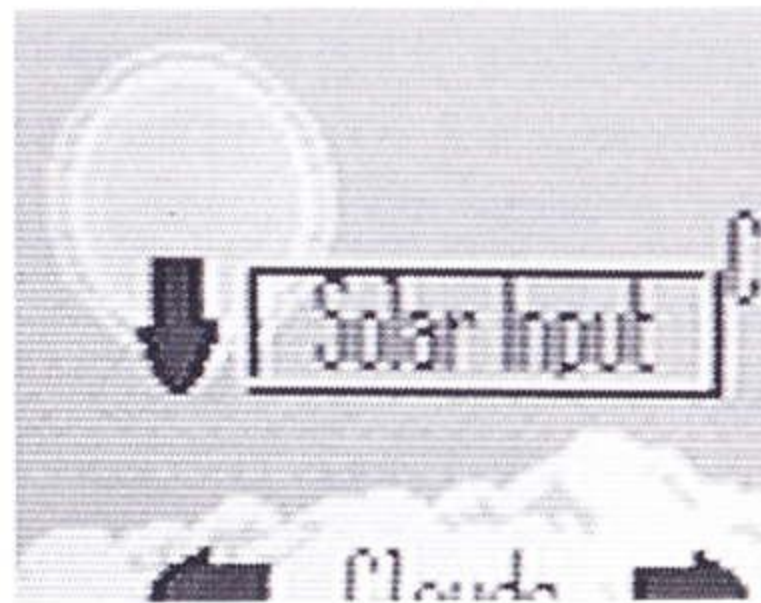


ADVICE

ATMOSPHERE MODEL



There are many ways that your atmosphere can be affected. Using this Control Panel lets you change variables that make the Earth a lush, green planet or a barren wasteland.



1. SOLAR INPUT

By controlling the heat rays from the sun, you can freeze your land or burn it to a crisp. It all depends on where you put the Control Bar.

2. CLOUDS

Nobody really likes clouds, but they serve a purpose: blocking sun-rays to keep the Earth cool.

3. RAINFALL

Increase rainfall or turn the taps right off and the soil will dry up and blow away.

4. CLOUD ALBEDO

This element is like a reflector sheet. At a high setting your clouds reflect more sunlight; at a low setting they let more shine through.

5. SURFACE ALBEDO

The surface of your planet can reflect or absorb any solar radiation that reaches it.

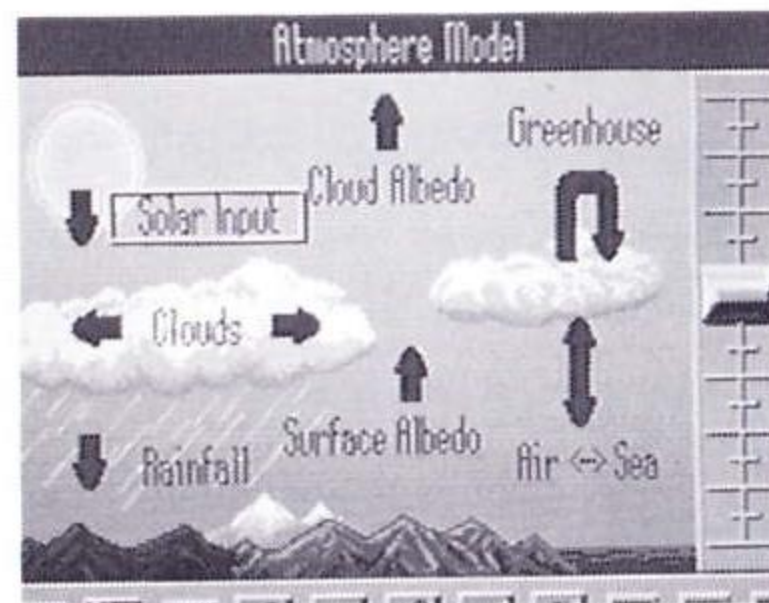
6. GREENHOUSE EFFECT

Reflected infrared radiation can be trapped by certain gases in the atmosphere causing the Greenhouse Effect (atmospheric warming). Use this setting to control the 'Effect'.

7. AIR-SEA TRANSFER

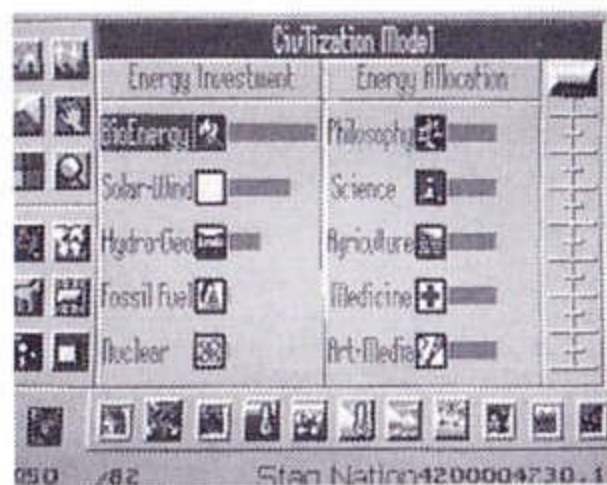
The vast water masses on earth help to stabilize the global climate by releasing or retaining heat. When this setting is turned up air temperatures become more stable.

The air temperature of your planet depends on the amount of CO₂ and the Greenhouse Effect setting. Keep an eye on CO₂ levels so that your planet does not overheat.



ADVICE

CIVILIZATION



Controlling your sentient (thinking) species is the key to success in SimEarth. You must make decisions on how to generate energy (Investment) and how to use the energy (Allocation).

ENERGY INVESTMENT



BIOENERGY

This energy is a product of burning wood, animal power, farming and the physical labor done by the sentient species.



SOLAR-WIND

Energy forever! Windmills, sailing ships, solar heating, wind-powered generators, solar electric cells, etc. Pump up the power!



HYDRO-GEO

Harness the Earth's forces. Waterwheel, geothermal, hydroelectric and many other types of energy are included in this group.



FOSSIL FUEL

Great for energy but bad for the planet. This energy comes from the remains of ancient animals.



NUCLEAR

Use nuclear reactors and take your chances on melt down or nuclear war.

ENERGY ALLOCATION



PHILOSOPHY

People who study philosophy have fewer wars. So for a more peaceful society slide up 'Philosophy'.



SCIENCE

Investing in science is crucial to advance to higher technological levels, but if you want to produce a stable civilization then spend some energy in other areas as well.



AGRICULTURE

More agricultural production means more food. Grow tons and the population may explode.



MEDICINE

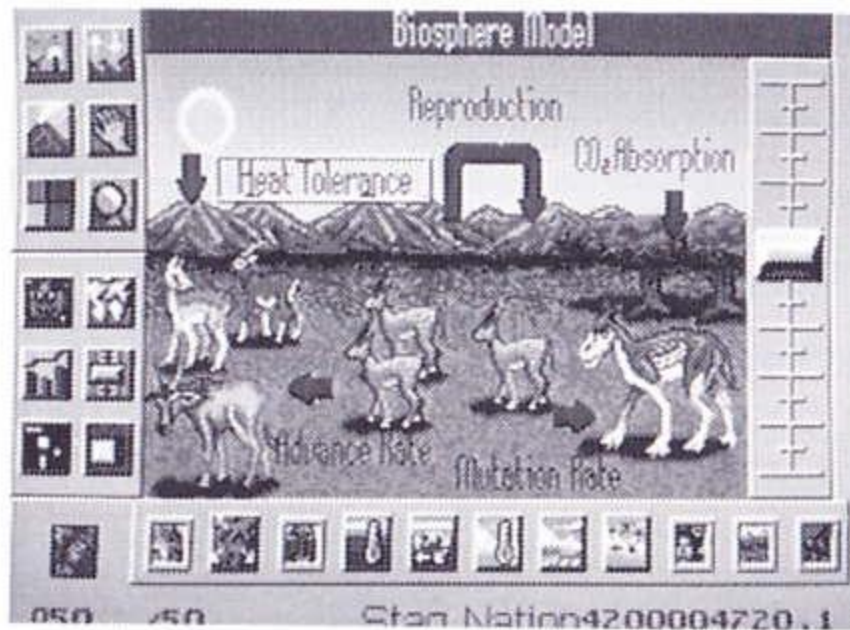
If you want your people to survive plagues and diseases then put some energy into 'Medicine'. In fact, the higher the setting is the less plagues there will be.



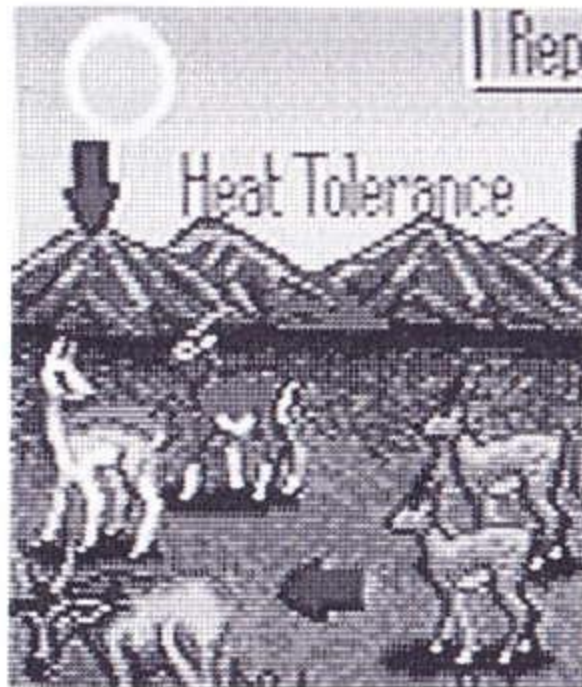
ART-MEDIA

Be free and creative and improve the quality of life of your sentient species.

BIOSPHERE MODEL

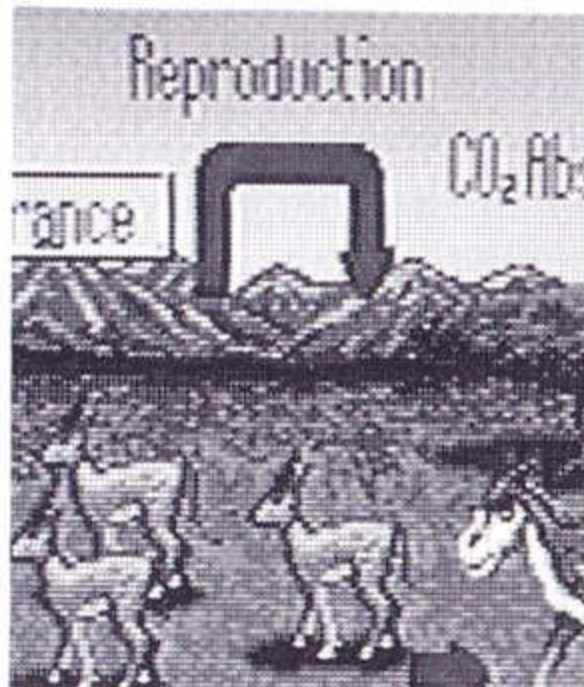


In order to survive on Earth all life-forms need certain conditions. This Control Model lets you adjust the variables that affect the living conditions of your life-forms.



1. HEAT TOLERANCE

In this model you can get your life-forms used to the heat (or cold) so that they can adapt to it. Higher settings equal greater adaptability.



2. REPRODUCTION

Have your animals reproduce quickly or slowly. And one reminder: they reproduce very quickly on the high setting, so beware of overpopulation.

3. ADVANCE RATE

This is the 'intelligence' setting. Slide the bar up to reach more advanced levels of evolution faster.

4. CO₂ ABSORPTION

Your plants have the ability to draw out CO₂ (carbon dioxide) from the atmosphere. Lower CO₂ levels equal lower temperatures; higher CO₂ levels equal higher temperatures.

5. MUTATION RATE

Mutate your life-forms so that they jump ahead to a new life class.

Warning : too much mutation can be dangerous.



GRAPH BUTTON

ATMOSPHERIC COMPOSITION GRAPH

TECHNOLOGY RATIO GRAPH

BIOME RATIO GRAPH



Use the Graph Menu to access the graphs and report windows. These give important information on exactly how your planet is getting along (in real time).

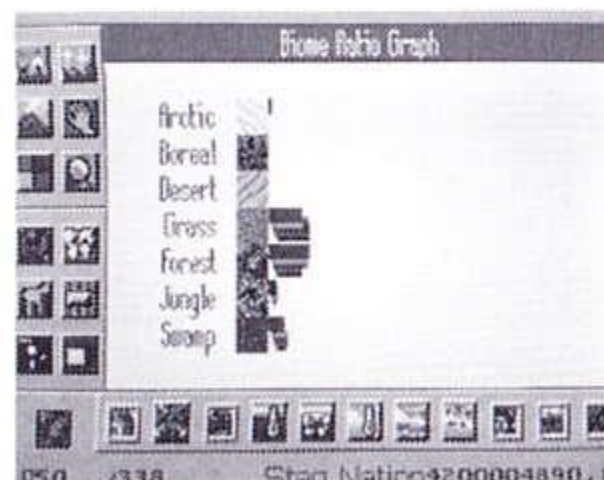


This is what your planet's atmosphere is composed of. The different bar colors indicate percentage levels for each element.

Red = above 10% Blue = 1%-10% Green = 1% or less.

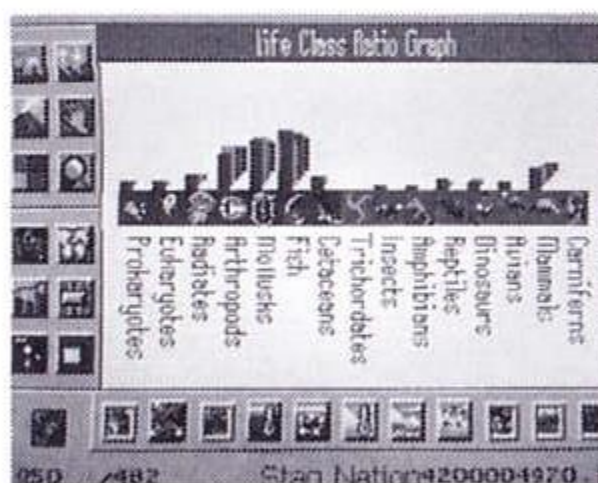


Check out the different levels of civilization on your planet. Stone age peoples can live with Atomic Age and Information Age people, but because the higher level civilizations spread quickly the lower level civilizations will be kicked off their land.

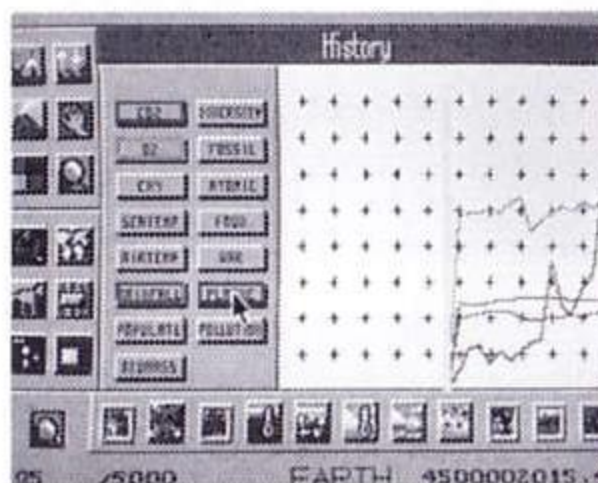


Find out which biomes are dominant by checking this graph. Remember that biomes are affected by climate and temperature.

What's living and what isn't? Some species will dominate while others will become extinct.



Check out this graph to find out the details of your planet's progress. It's really useful because you can see exactly what is happening almost right away.



CO ₂	Carbon Dioxide levels in the atmosphere.
O ₂	Oxygen levels in the atmosphere.
CH ₄	Methane levels in the atmosphere.
SEATEMP	Average sea temperature.
AIRTEMP	Average atmospheric temperature.
RAINFALL	Average planetary rainfall.
POPULATE	Population of sentient species.
BIOMASS	Total weight of plant and animal matter.
DIVERSITY	Number of different species of life.
FOSSIL	Fossil fuel reserves.
ATOMIC	Atomic fuel reserves.
FOOD	Total amount of food production.
WAR	Level of armed conflict.
PLAGUE	Number of plagues happening.
POLLUTION	Total amount of toxins and pollutants.

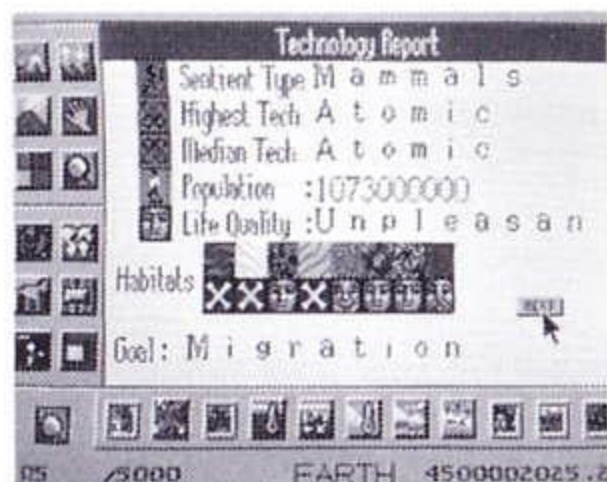
LIFE CLASS RATIO GRAPH

HISTORY WINDOW

ELEMENTS

REPORT WINDOW

REPORT WINDOW



This window gives an excellent summary on what the conditions are like on your planet. You can use this information to make decisions about the future of your planet.

CIVILIZATION REPORT

SENTIENT TYPE

Life class that is dominant and intelligent.

HIGHEST TECH

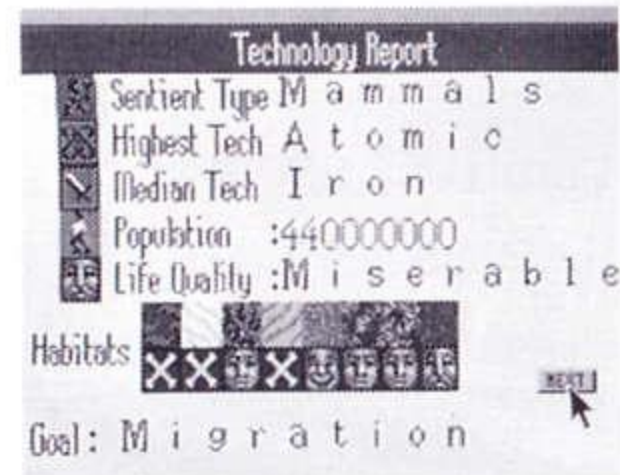
Highest level of civilization.

MEDIAN TECH

Average level of technology.

POPULATION

Current population of your sentient species.



LIFE QUALITY

An overall rating on the quality of life for your sentient species. It is related to the Art/Media setting and amount of hours worked.

LIFE QUALITY

Heavenly, Marvelous, Good, Pleasant, Tolerable, Unpleasant, Bad, Miserable and Hellish.

HABITATS

Shows the ability of your sentient species to adapt to the environment and live in the various biomes.



Can't live here.



Hates it here.



Not bad.



Paradise!

GOAL

This is the level you must reach in order to advance to the next time scale.

This section shows how work is changed into available energy. The energy sources are listed, as well as the number of weekly work hours put into the sources and how much energy you get from them.

Technology Report					
Work	×	Eff%	=	Energy	Allocation
30		53	=	1766	536
20		25	=	563	536
10		31	=	352	536
0		30	=	0	536
0		0	=	0	536
60 hrs/wk				2681	
Goal: Migration					

OS /5000 EARTH 4500001996.7

ENERGY REPORT

WORK

This is the number of hours per week that your sentient life-forms are working. The less they work the happier they are, but it'll take them a long time to get anywhere. Adjust the work hours by changing 'Energy Investment' in the Civilization Model Control Panel.

EFF%

Shows you how much energy you get back for the amount of work you put in. The efficiency level changes depending on which technology level you are in.

ENERGY

Gives the amount of each kind of energy produced, along with a total for all energy sources. Power to the people!

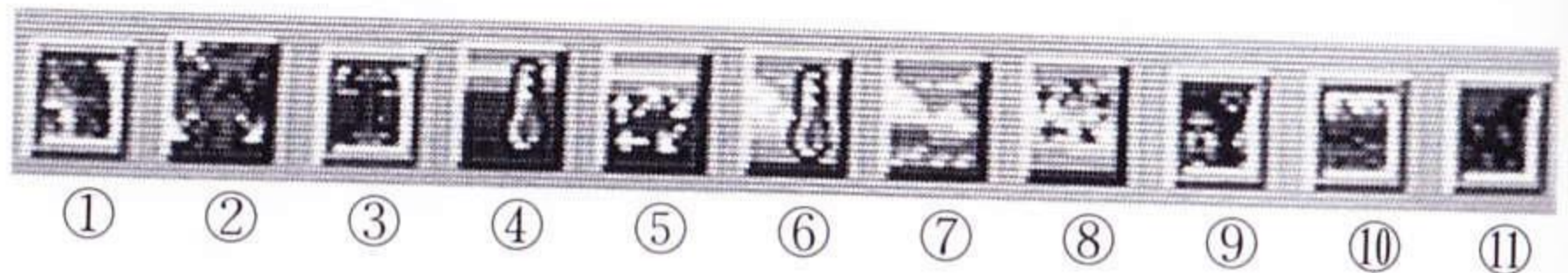
THE DATA DISPLAY BUTTONS

WHAT'S UP



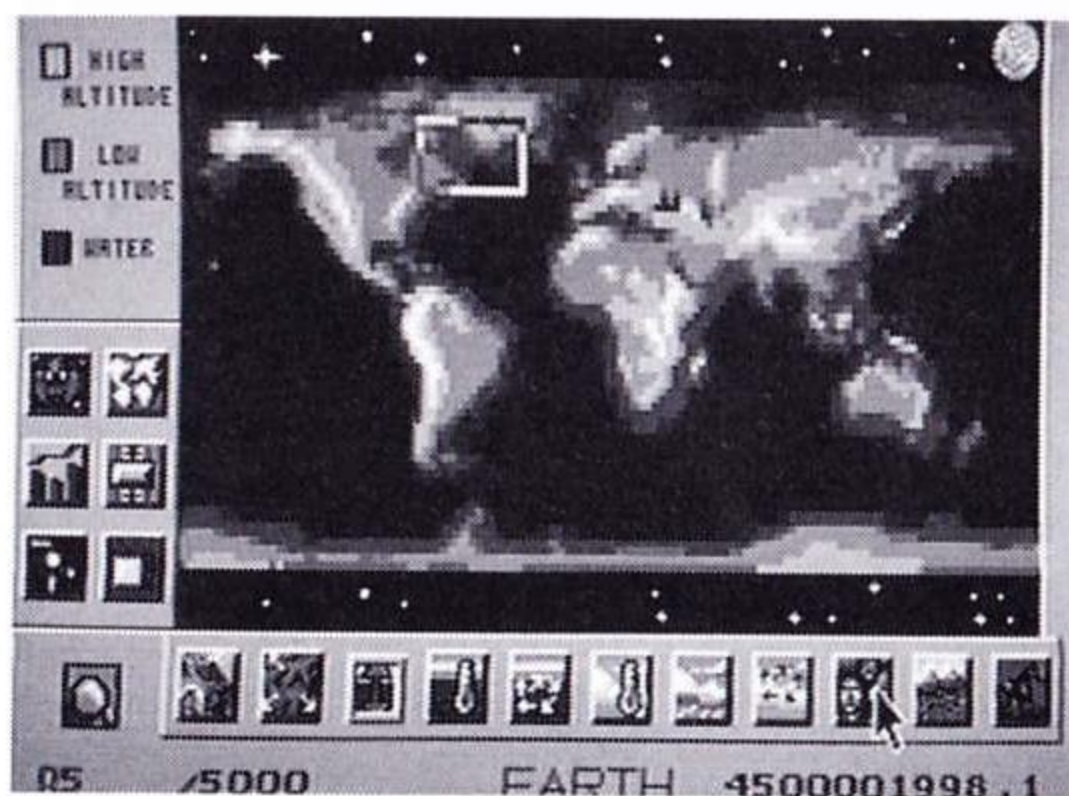
See what your planet is up to. Every element can be checked out closely using the different buttons from the Data Display Buttons. To select an element just press Button I over a button. In the Map and Globe screens different data values have different colors which you can check out in the Legend Box.

See what your planet is up to. Every element can be checked out closely using the different buttons from the Data Display Buttons. To select an element just press Button I over a button. In the Map and Globe screens different data values have different colors which you can check out in the Legend Box.



- ① Event - Shows global events like wars, hurricanes, etc.
- ② Continental Drift - Displays direction and speed of continental drift.
- ③ Sea Level - Check out the elevation of the ocean floor.
- ④ Sea Temperature - Gives the sea temperature.
- ⑤ Sea Currents - See the seas' currents ebb and flow.
- ⑥ Air Temperature - Find out the air temperature.
- ⑦ Rainfall - Shows the amount of rainfall.
- ⑧ Air Currents - Watch the winds blow.
- ⑨ Civilizations - Keep an eye on your civilizations.
- ⑩ Biomes - Shows the distribution of biomes.
- ⑪ Life-forms - Check out the kinds of animals on your planet.

Data appears on lots of different screens. To get different views on the same information just switch from EDIT to MAP to GLOBE screens.



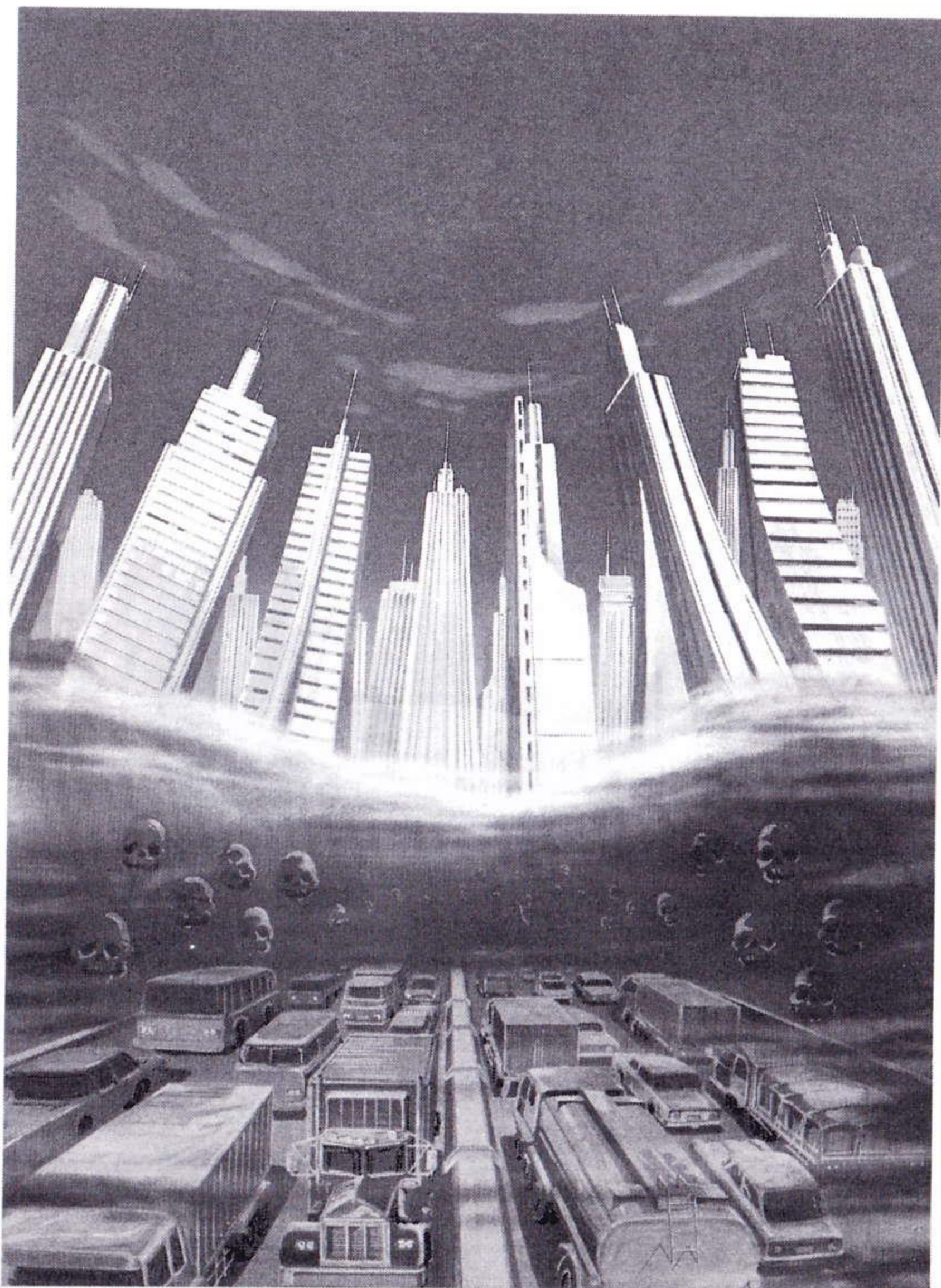
LOOK AT ALL THE SCREENS!

The Legend Box (in the Map and Globe screens) gives you the specifics on the data selected from the Data Display Panel. Watch biomes spread or civilizations collapse.



LEGEND BOX

SimEarth™



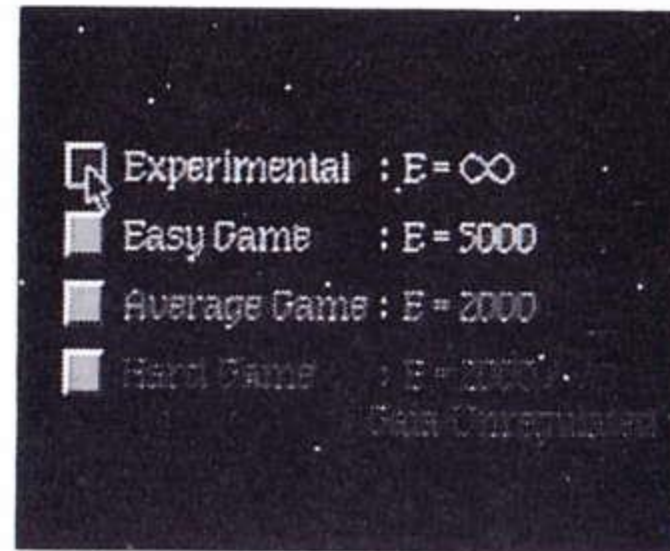


THE SCENARIOS

SimEarth™

MODE SET SCREEN

There are eight scenario planets in SimEarth. You can play them in Easy, Medium, Hard or Experimental modes. Each scenario has a goal for you to reach, but keep in mind that there are no real 'winners' or 'losers'.



- Experimental
- Easy Game
- Average Game
- Hard Game

Use this screen to select the level you want to play in. Each level has a different amount of maximum EUs that can be used in your scenario. In Experimental Mode, however, you get an unlimited amount of EUs.

1. RANDOM

Start a different planet everytime you choose 'RANDOM'. The results of each game will vary because each planet is different from the one you played before. You also have four time scale options to pick from.

2. AQUARIUM

If you like swimming with fish, dolphins or sharks then this is the planet for you. But you have to create continents so civilizations can grow and advance. Maybe you'll have to forget about your aquatic sports for a while.

Help! Help! Your civilization is trapped in the Stone Age on a small island. They have to get to bigger chunks of land in order to leap ahead with technology. Why not use the Altitude icon to build a land bridge for them to travel on? Try other methods too.

Go way, way back to 550 million B.C. and watch the continents drift apart and zillions of new life-forms come into existence. Sit back and see the action happen or jump in and help evolution on its way.

Ow! We're in real trouble nowadays. War, famine, pollution, disease, greenhouse warming and maybe a nuclear winter around the corner. Don't worry, be happy. All you have to do is solve the world's problems first.

3. STAG NATION

4. EARTH- THE CAMBRIAN ERA

5. EARTH- MODERN DAY

TIME SCALES

Here are the four time scales to choose from. Start way back in time with the Geologic Scale or go high-tech in the Technology Scale. Of course, in-between there are the Evolution and Civilization scales too.



6. MARS

You've reached 'Nanotech' but your home planet is overcrowded. Your mission is to terraform Mars and turn it into a place to be proud of. But your Model Control Panels are turned off in this mode! AAGH!! Never fear - use a few meteors and lots of terraformers.

7. VENUS

This is a tough one. Venus is usually 477°C and you have to get people to live on it. What to do? Try using an Oxygenator to draw CO₂ out of the atmosphere and then slap down some biomes. Keep a close eye on the graphs for any major changes.

8. DAISYWORLD

This scenario is very different from the others. The idea, based on the Gaia Theory, is that life-forms and environment together control the climate. If the theory is true then the daisies should help stabilize the planet's temperature.

GAIA THEORY IN ACTION

You have to test Gaia's ability to regulate temperature. To do this try filling the world with daisies. If the theory works then the planet's temperature should stay about the same.



APPENDIX

SimEarth[™]

THINGS TO TRY

- 1 Try terraforming Mars and Venus without using biome factories.
- 2 There is a 'secret' life-form. Can you find it? Try to 'mutate' one of your most advanced civilizations. Can you then nurture this new life-form to sentience and blast off to the stars?
- 3 Can you develop a planet dominated by whales? To do it, you may need to 'exterminate' their competition.
- 4 Can you get the empty space on Daisyworld below 10% in Hard Mode?
- 5 What happens to the Sun after 10 billion years? There is a quick way to see. The trick is to keep your planet in the Geological Time Scale. But it's not so easy!
- 6 Can you control the planet's temperature with only the CO₂ absorption setting?
- 7 Can you bring about the end of civilization on modern Earth? There are more than a few ways to do it.
- 8 Can the Stagnates make it to the large continent without a land bridge?

A civilization's advancement depends on the total amount of energy it is producing and the amount of energy allocated to Science. If you want your civilization to advance quickly, you should give Science the largest allotment of energy in the Civilization Model. You can get some idea of how close your civilization is to advancing to the next step by watching the total energy output found in the Report Window.

TECH. LEVEL	APPROX. ENERGY NECESSARY
Bronze	200
Iron	600
Industrial	2000
Atomic	6000
Information	40000
Exodus	60000

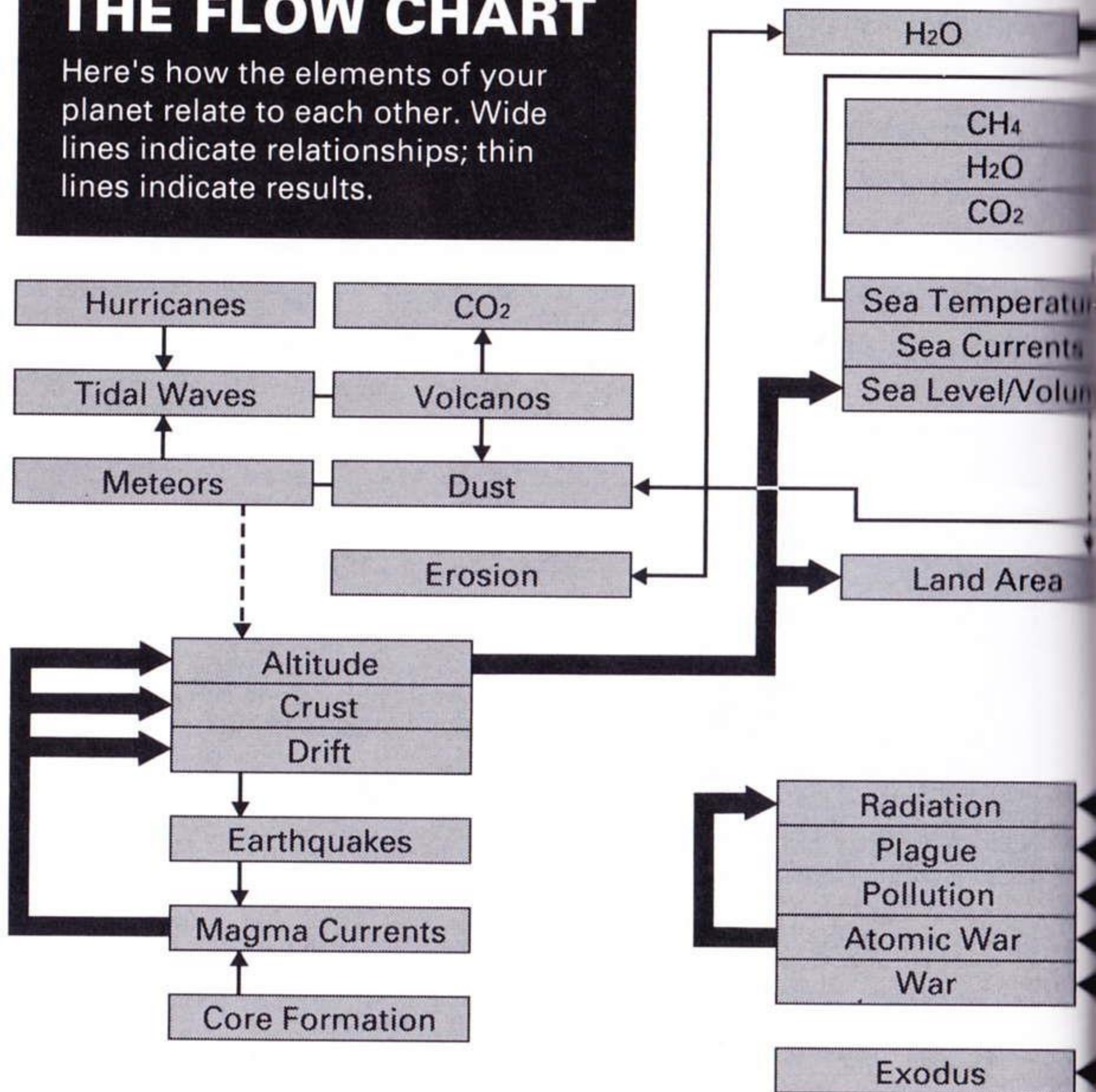
If your society does not advance even though it seems to be producing plenty of energy, try turning up Science energy allocation in the Civilization Model.

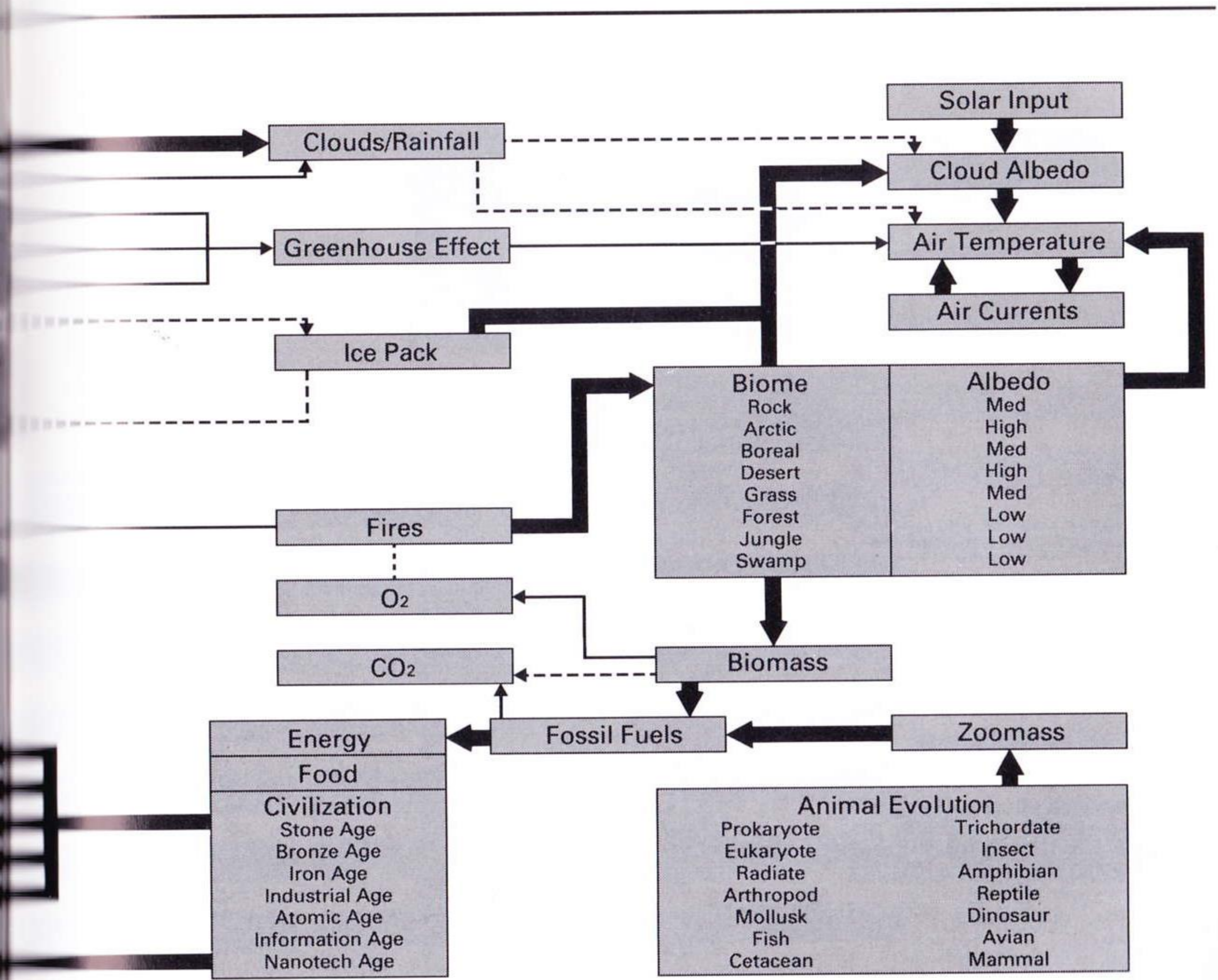
HOW SOCIETIES ADVANCE

THE FLOW CHART

THE FLOW CHART

Here's how the elements of your planet relate to each other. Wide lines indicate relationships; thin lines indicate results.





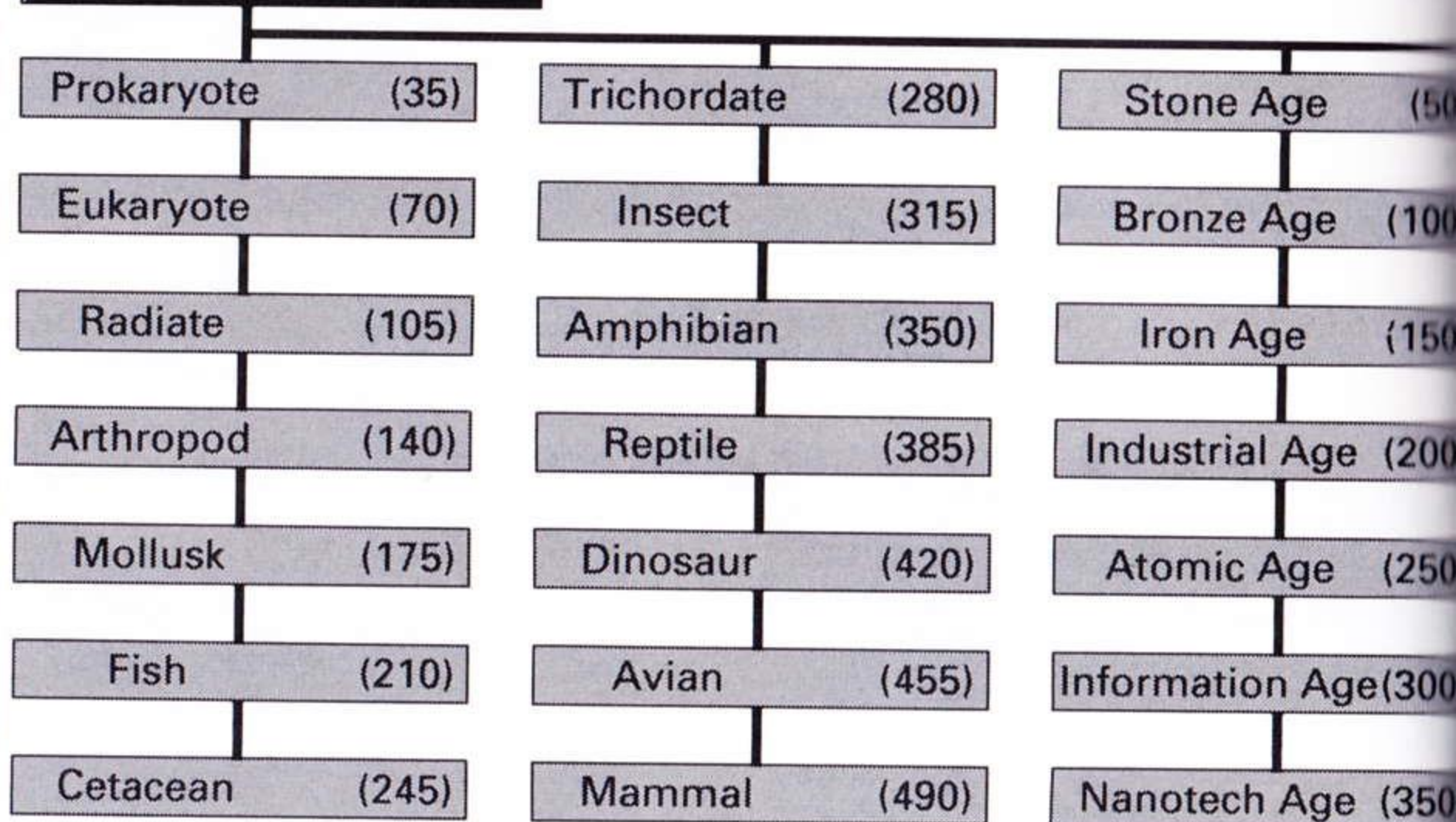
BUTTON LIST

BUTTON LIST

This is a quick-find list for the buttons.



Life



- Biome (500)
- Oxygenerator (500)
- N₂ Generator (500)
- Hydrator (500)
- CO₂ Generator (500)
- Monolith (2500)
- Ice Meteor (500)

Disaster

- Hurricane (50)
- Tidal Wave (50)
- Meteor (50)
- Volcano (50)
- Atomic Bomb (50)
- Fire (50)
- Earthquake (50)
- Plague (50)

Land

- Raise (50)
- Lower (50)

Biome

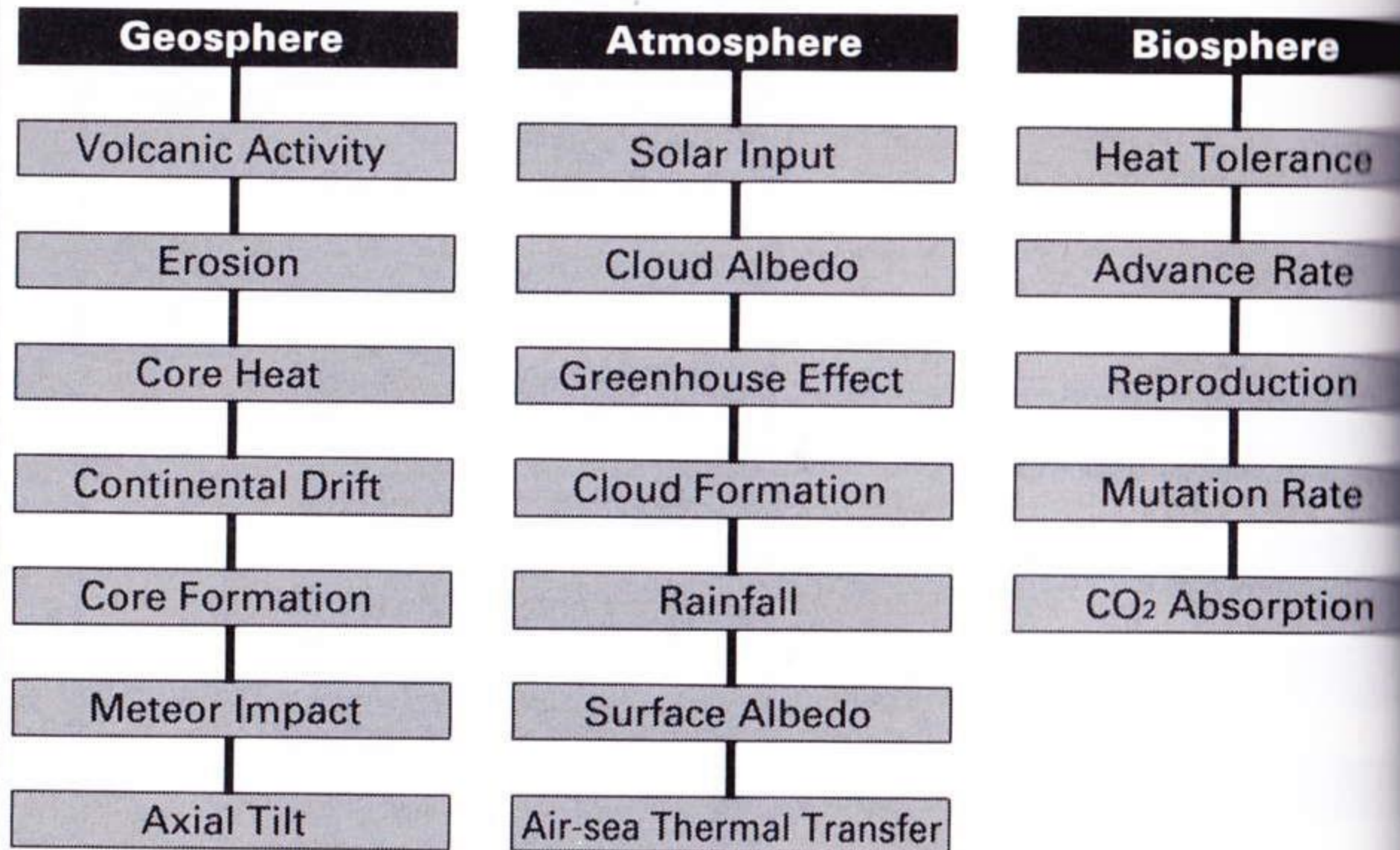
- Rock (50)
- Arctic (50)
- Boreal (50)
- Desert (50)
- Grass (50)
- Forest (50)
- Jungle (50)
- Swamp (50)

Examination (5)

**MODEL
CONTROL
PANELS**



Model Control Panels



Civilization

BioEnergy

Solar-wind

Hydro-Geo

Fossil Fuel

Nuclear

Philosophy

Science

Agriculture

Medicine

Art-Media

Graphs

Atomospheric Composition

Biome Ratio

Life Class Ratio

Technology Ratio

History Window

Report Window

Screens

Edit

Map

Globe

Options

Display

Speed

Sound

Call the TurboTeam at 1-900 FUN-TG16 for additional game tips and information.

Please note: The first 30 seconds of this call are free, but you will be charged 99 cents for each minute after that (up to 5 minutes). The charge for this call will appear on your next phone bill.

Please be sure to ask your parents' permission before you call!

Care of Your CD Game and Getting Started

Care of Your CD Game

- 1 Keep your CD game clean.
- 2 Make sure the shiny "signal reading" side of your CD is clean at all times.
- 3 If your CD does become dirty, wipe it clean with a soft cloth.
- 4 Make sure that the surface of your CD does not get scratched.
- 5 Take the CD carefully in and out of its case.
- 6 Never write on your CD. Writing on it may damage its surface or interfere with its operation.
- 7 Never bend your CD.
- 8 Do not try to make the hole in your CD larger!
- 9 Place your CD back in its case when you have finished playing.
- 10 Avoid high temperature and humidity.

Getting Started

<When you use TurboGrafx™-CD Player>

- 1 Make sure your TurboGrafx-CD Player, Game interface, television and audio system are properly connected (refer to your TurboGrafx-CD Player's instruction manual).
- 2 Plug your TurboGrafx-CD Power Adaptor into a wall outlet and slide the Game interface power switch (the lower switch) to the right ("ON" position). Turn on your television and make sure that it is on the correct channel.
- 3 Carefully insert the TurboGrafx *Super CD System card into the TurboGrafx-16 game-card port and slide the upper power switch to the right ("ON" position).
- 4 Open the TurboGrafx-CD player cover by lifting the handles. Avoid touching the inside of the unit. Never operate your CD player with the cover open.
- 5 With the game-title side of your CD game facing upwards, set your disc into position. Make sure that the hole is centered on the spindle and close the cover. The initial TurboGrafx-CD screen should appear.

<When you use TurboDuo™>

- 1 Make sure your TurboDuo™, Game interface, television and audio system are properly connected (refer to your TurboDuo™ instruction manual).
- 2 Plug your TurboDuo™ Power Adaptor into a wall outlet and slide the power switch to the right ("ON" position). Turn on your television and make sure that it is on the correct channel.
- 3 Open the TurboDuo™ CD player cover by pressing the button. Avoid touching the inside of the unit. Never operate your CD player with the cover open.
- 4 With the game-title side of your CD game facing upwards, set your disc into position. Make sure that the hole is centered on the spindle and close the cover. The initial TurboGrafx-CD screen should appear.

Setting your CD disc

- 1 Take the CD disc carefully out of its case.
Note: NEVER bend your CD disc.
- 2 Open the TurboGrafx-CD player cover by lifting the handles.
Note: Avoid touching the inside of the unit. NEVER operate your CD player with the cover open.
- 3 Set your CD disc into position with the title side up.
- 4 Make sure that the hole is centered on the spindle and close the cover.
Note: Be sure to reset by pressing [SELECT] while holding down [RUN] before turning power OFF. Place your CD disc back in its case after you have finished playing.

* Super CD System card available through
1-800-366-0136

TurboGrafx™-CD Game Disc 90-Day Limited Warranty

Turbo Technologies, Inc. ("TTI") warrants to the original consumer purchaser that this product shall be free from defects in material and workmanship under the following terms:

HOW LONG IS THE WARRANTY

This product is warranted for 90 days from the date of the first consumer purchase.

WHO IS PROTECTED

This warranty may be enforced only by the first consumer purchaser. You should save your proof of purchase, and be prepared to present it in case of a warranty claim.

WHAT IS COVERED

Except as specified below, this warranty covers all defects in material or workmanship in this product.

The following are not covered by the warranty:

1. Any product that is not distributed in the U.S.A. by TTI, or that is not purchased in the U.S.A. from an authorized TTI dealer, or that is sent for warranty service from outside the U.S.A.
2. Damage, deterioration or malfunction resulting from:
 - a) accident, negligence misuse, abuse, neglect, impact, fire, liquid, lightning or other acts of nature, commercial or industrial use, product modification or tampering, failure to follow instructions supplied with the product;
 - b) repair or attempted repair by anyone not authorized by TTI;
 - c) any shipment of the product (claims must be submitted to the carrier);
 - d) removal or installation of the product; and
 - e) any other cause that does not relate to a defect in material or workmanship
3. Any product on which the TTI serial number has been altered, defected, or removed.

HOW TO OBTAIN WARRANTY SERVICE

For warranty information, call 1-800-366-0136 Monday-Friday 8:00 A.M. to 7:00 P.M. Central Time.

LIMITATION OF IMPLIED WARRANTIES

ANY APPLICABLE IMPLIED WARRANTIES, INCLUDING WARRANTIES OF MERCHANTABILITY AND FITNESS FOR A PARTICULAR PURPOSE, ARE LIMITED IN DURATION TO THE LENGTH OF THIS WARRANTY, AND ARE SUBJECT TO ALL CONDITIONS HEREIN.

EXCLUSION OF DAMAGES

TTI'S LIABILITY FOR ANY PRODUCT IS LIMITED TO THE REPAIR OR REPLACEMENT OF THE PRODUCT AT OUR OPTION. TTI SHALL NOT BE LIABLE FOR :

1. Damage to other property caused by this product, damages based upon inconvenience, loss of use of the product, loss of time, commercial loss; or
2. Any other damages, whether incidental, consequential or otherwise.

SOME STATES DO NOT ALLOW LIMITATIONS ON HOW LONG AN IMPLIED WARRANTY LASTS AND/OR DO NOT ALLOW THE EXCLUSION OR LIMITATION OF INCIDENTAL OR CONSEQUENTIAL DAMAGES, SO THE ABOVE LIMITATION AND EXCLUSIONS MAY NOT APPLY TO YOU.

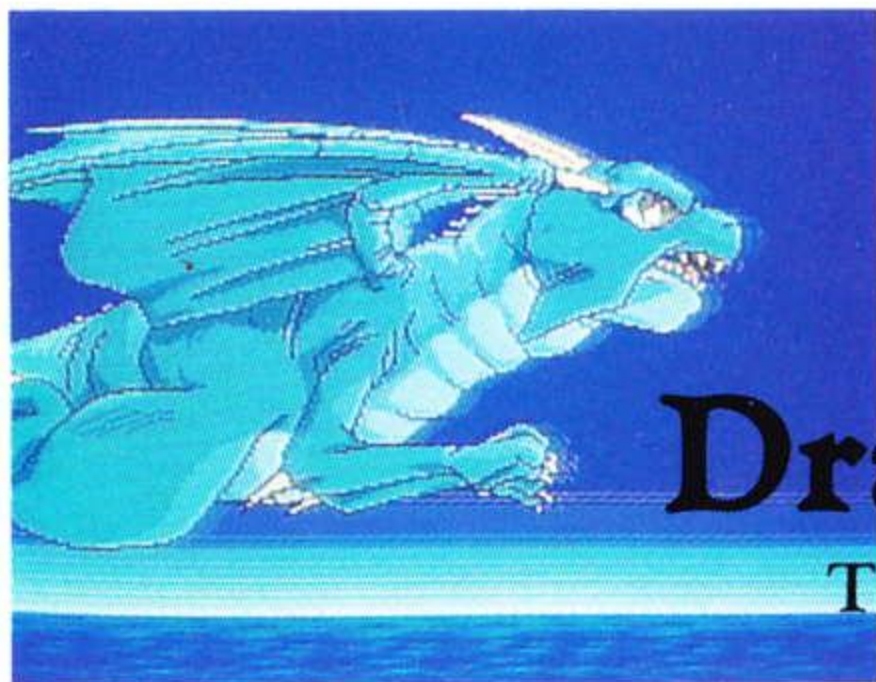
HOW STATE LAW RELATES TO THE WARRANTY

This warranty gives you specific legal rights, and you may also have other rights which vary from state to state.

Turbo Technologies, Inc.
6701 Center Drive West, Suite 500
Los Angeles, CA 90045

Begin Your Adventure!

COMPACT
disc



Dragon Slayer™

The Legend Of Heroes

The world... Isrenasa. A world blessed with the bounties of nature - lush, green hills, rolling plains, majestic mountains and cobalt blue seas. But in the deep dark night of the seventh moon, disaster struck their capital, Castle Sylvan.

Game Copyright 1992 Hudson Soft.
Game Copyright 1989, 1990 Falcom.

ON
SALE
NOW!

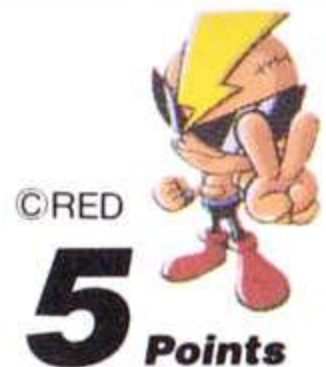
"TurboGrafx," "TurboChip,"
"TurboPad" and "TurboDuo"
are trademarks.

"SimEarth" is a trademark of
Maxis.

Printed in U.S.A.

TGXCD1036

Printed on Recycled Paper



Distributed by
Turbo Technologies, Inc.

6701 Center Drive West, Suite 500
Los Angeles, CA 90045